

Butterfly Mouse Harness

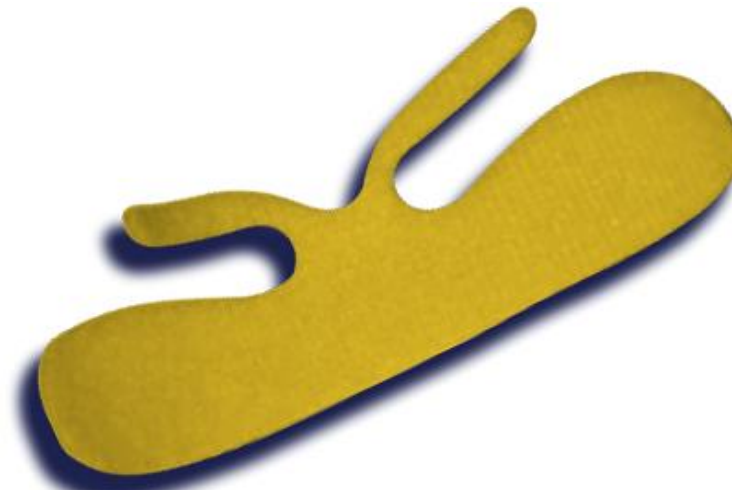
I n s t r u c t i o n s f o r U s e



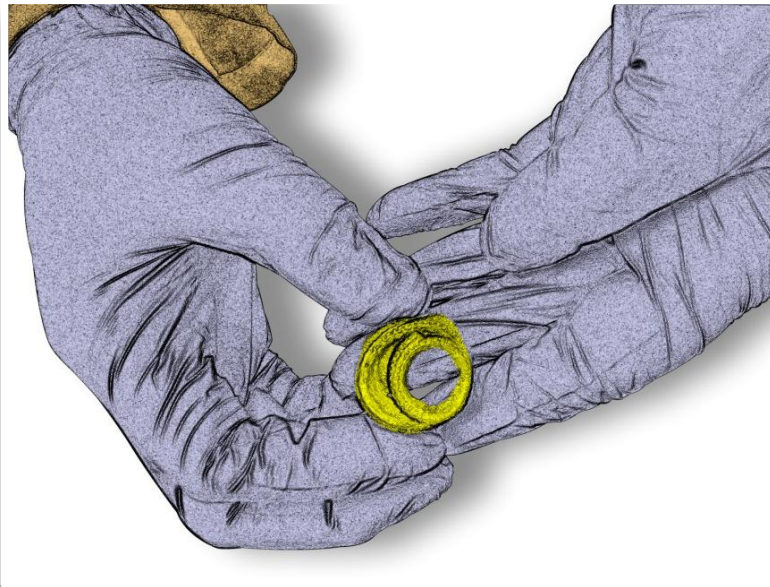


The Butterfly Harness for Mice...

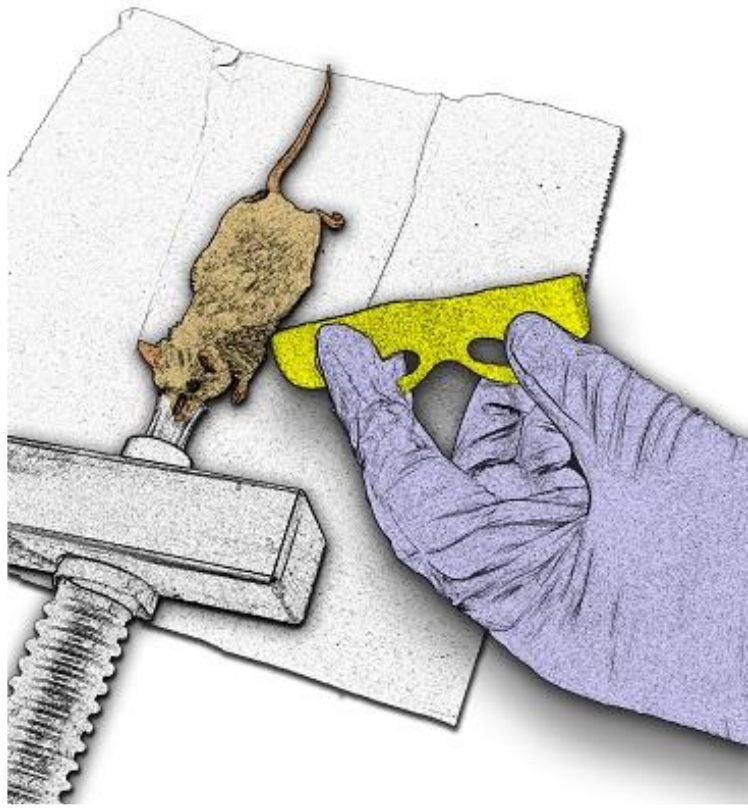
LOMIR's Butterfly Mouse Harness is made from a single piece of soft back to back Velcro, enabling infinite adjustment for individual animals. The Butterfly Harness has many applications including protecting surgical sites, topical applications and is compatible with tethering systems for intravenous infusion.



1. Mouse should be sedated (e.g. Isoflurane).
2. Mouse jacket material (One-Strap™ Velcro) has “hook” side (hard) and “loop” side (soft). Prepare the mouse harness for use by closing the neck and body straps, keeping soft side inward.
3. Roll jacket between hands several times to make it flexible.



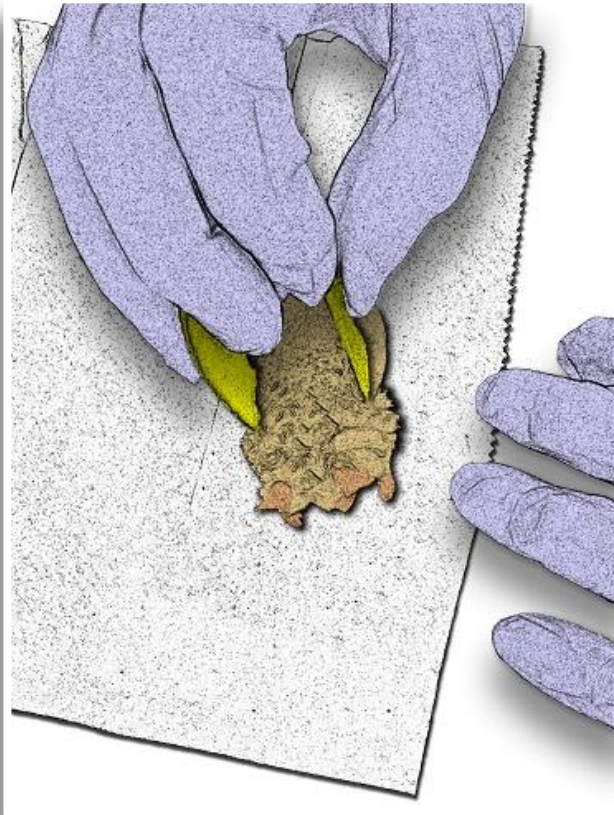
4. Undo straps and open jacket, soft side facing up.



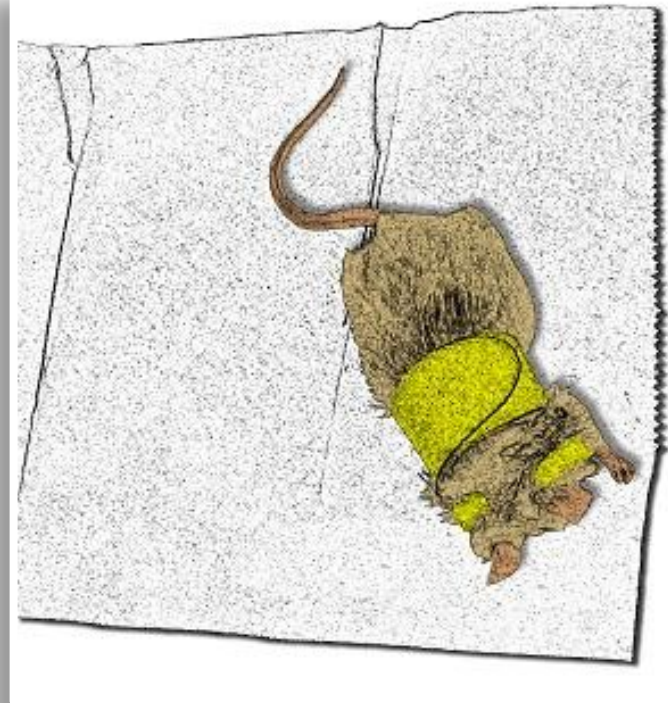
5. Place mouse on top of jacket, making sure forelegs fit through the slot between collar and body.



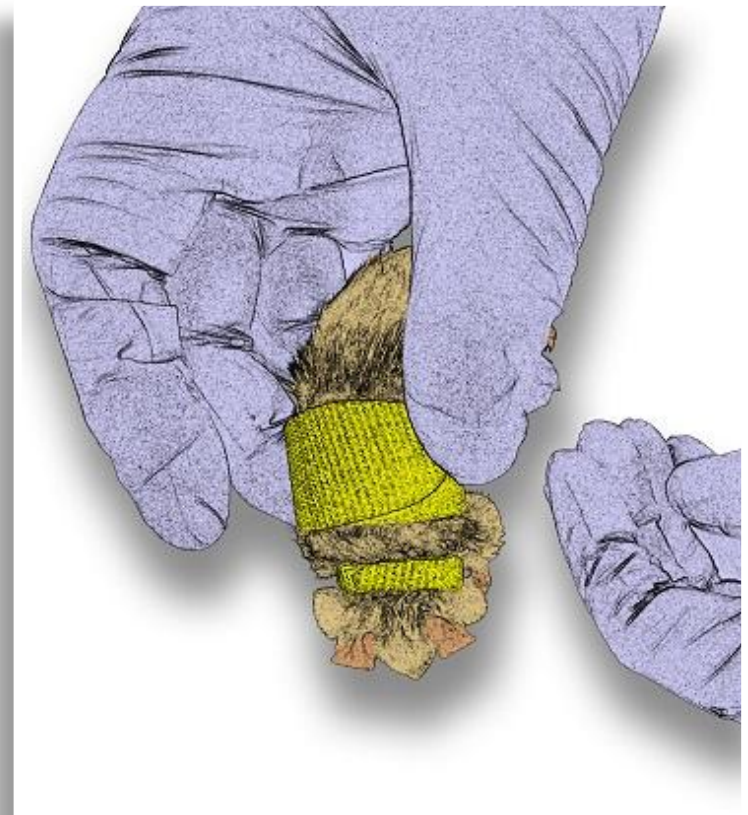
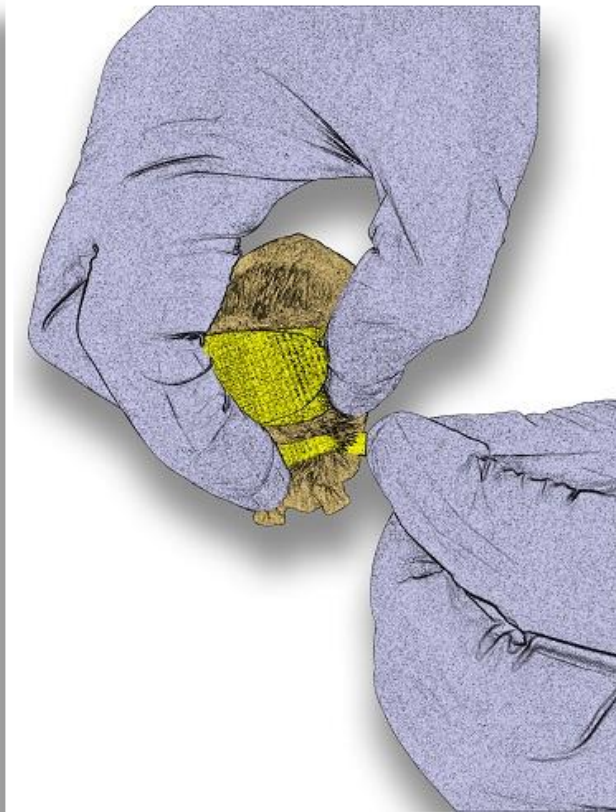
6. Hold the main body flaps up (as a harness) and position the mouse body appropriately (i.e., forelegs are in correct position, mouth and neck are in front of collar).



7. Close the body flap (left or right flap underneath – it does not matter). It should be reasonably snug, but this flap is not what retains the harness on the mouse (it is to protect upper thorax/dorsal shoulder area).

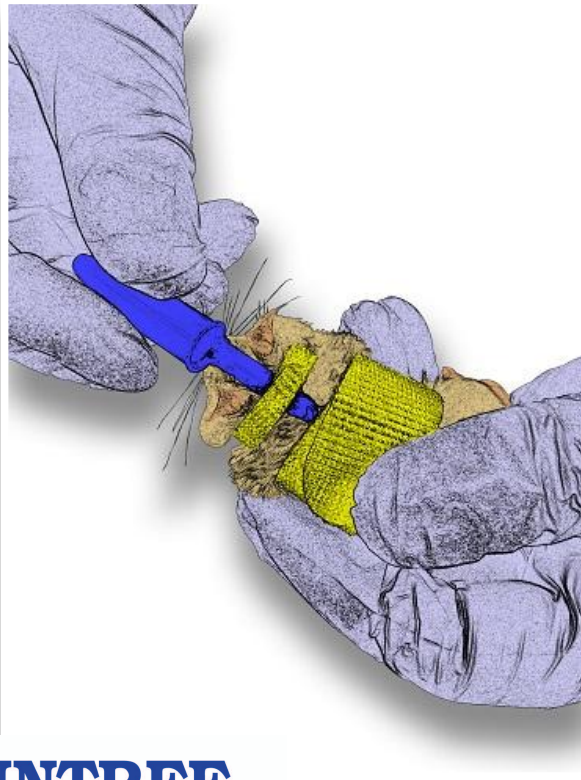


8. Hold mouse in hand, position collar around the neck of the mouse (making sure forelegs are inserted correctly and mouth is clear of jacket). Close the neck flap (left or right flap underneath – it does not matter).

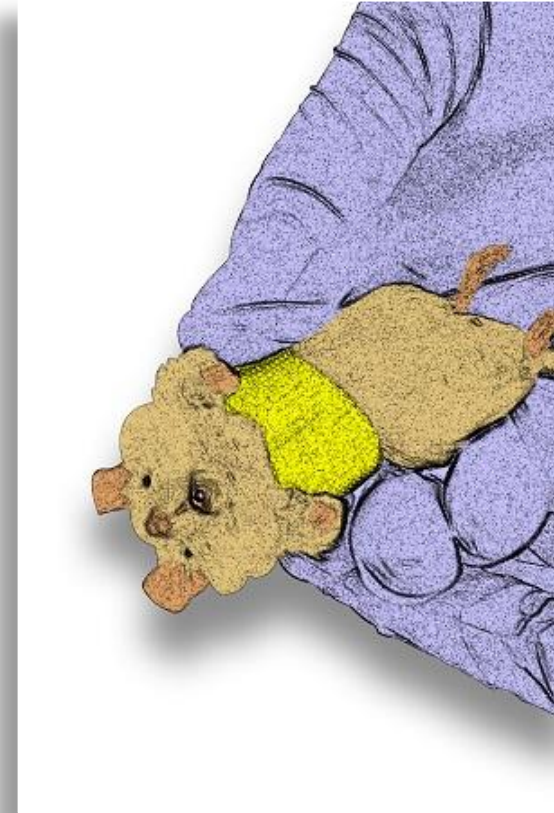


9. To make sure neck flap is appropriately snug, insert a 2mm diameter probe (a BIC™ pen cap works well for this) underneath and make sure there is sufficient room for the probe to easily fit. Adjust neck flap if necessary.

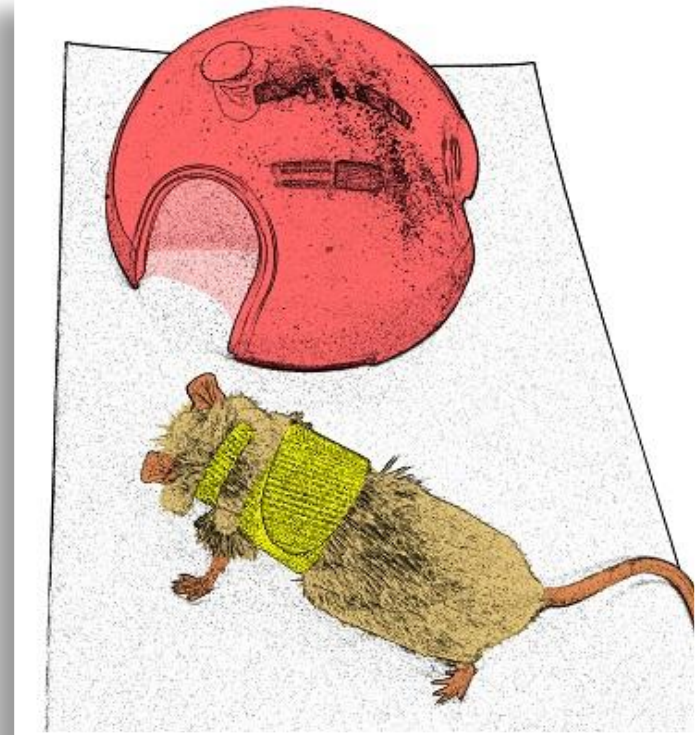
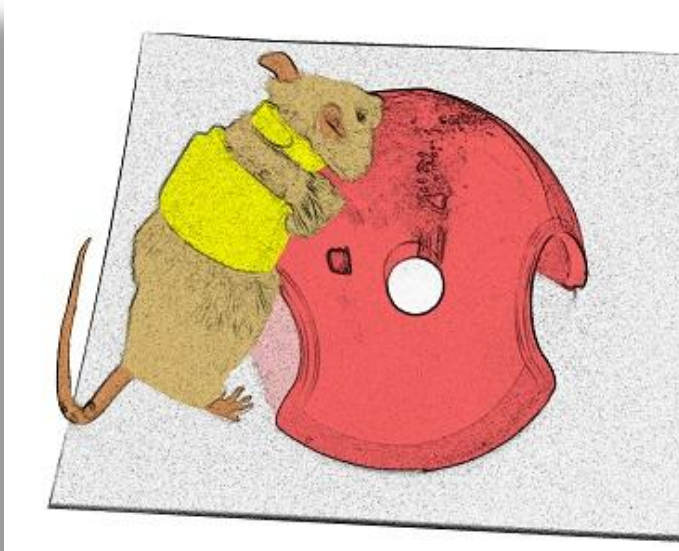
Note: too loose and the animal can escape the jacket, too tight and animal can experience edema.



10. Double-check harness fit. Make sure forelegs are fully extended through jacket opening; make sure mouth/neck is clear of jacket.



11. Return mouse to cage and observe recovery. Mouse should be able to engage in all normal behavior (e.g., walking, climbing, grooming, etc. with no restriction).



Notes:

- Mice will initially attempt to escape jacket. However, after 1-2 days they become acclimated and accept wearing the jacket. Some clever mice will utilize their habitat (plastic red hemisphere above) to escape their jacket (they wedge the body/collar against an opening and leverage the jacket off as they back out); thus, it is recommended to **remove such habitats for the first 24-48 hrs.**
- The mouse should be checked for correct fit of the collar on a daily basis. The primary concern is **edema caused by too tight collar adjustment.** At any sign of edema, loosen the collar.
- Once you become familiar with the technique, fitting the mouse jacket takes no more than a few seconds.

Your Distributor is:
Braintree Scientific, Inc.
PO Box 850498, Braintree, MA 02185
781-917-9526
Email: Info@braintreesci.com
Web: www.braintreesci.com

