

The Rat Wrap



 **BRAINTREE**
SCIENTIFIC, INC.
LAB RESEARCH PRODUCTS

P.O. Box 850498

Braintree MA 02185

www.braintresci.com

Phone (781) 917-9526

Fax (978) 244-8917

info@braintresci.com

How to Use the Rat wrap

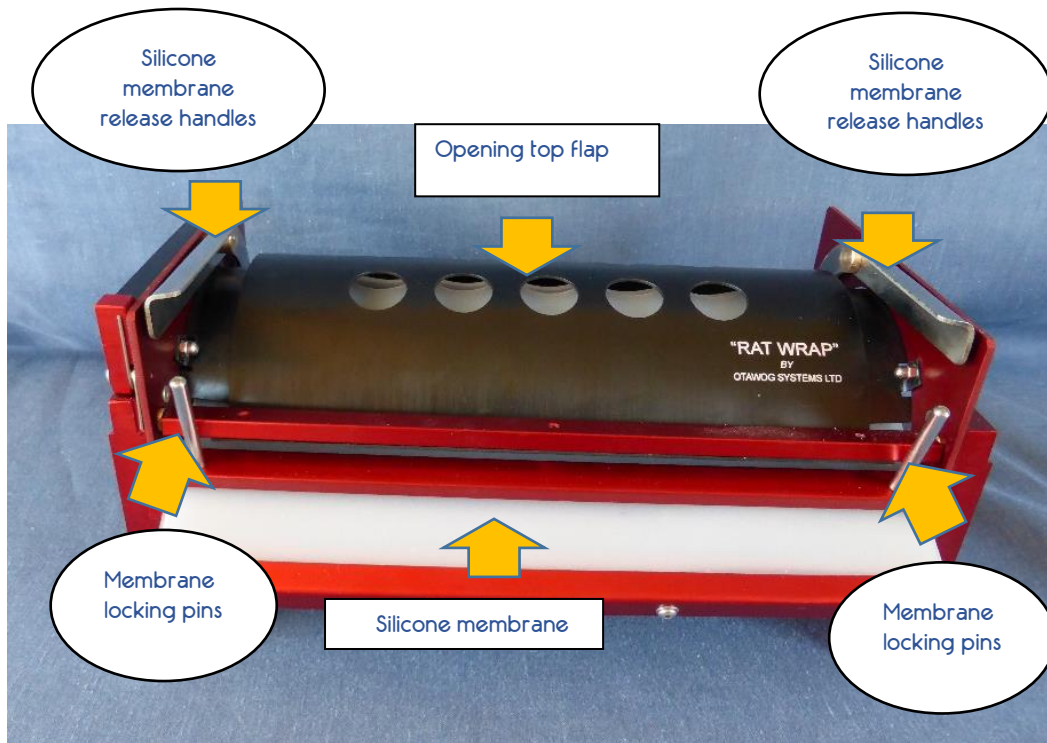


Figure 1: Front view of Rat Wrap

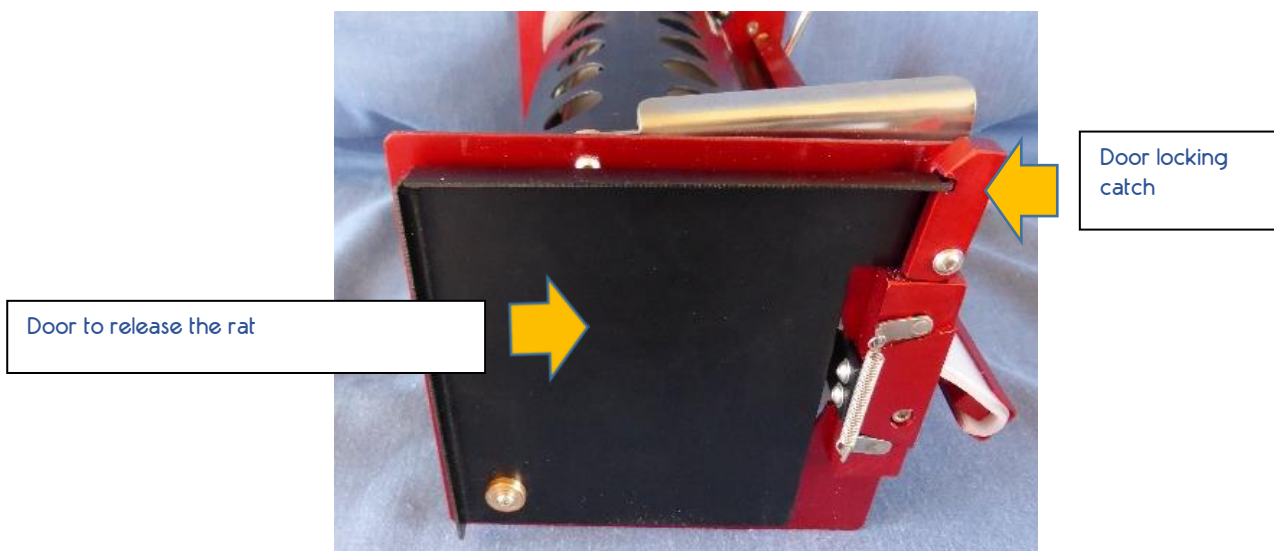


Figure 2: Door end of Rat Wrap

To wrap a rat:



Figure 3: Place the rat in front of the opening and it should run into the darkened tunnel. Rats should be adult or at least 150-200g.



Figure 4: Gently pull the silicone membrane towards you to wrap-up the rat and then lock the membrane as shown in figures 5 and 6.



Figure 5: Shows the locking pins in the vertical unlocked position.



Figure 6: Shows the locking pins in the horizontal or locked position.



Figure 7: Open the top black flap.

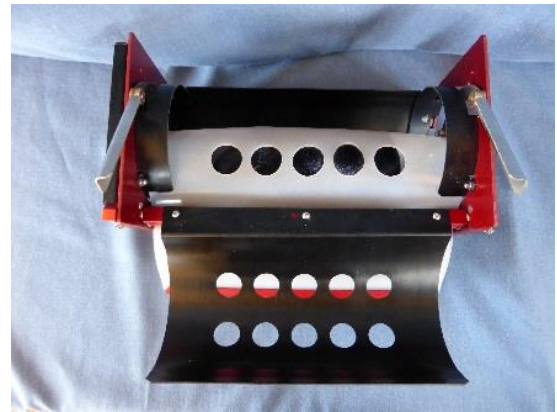


Figure 8: Animal is now visible and can be injected subcutaneously or observed.

To release the rat from the Wrap:



Figure 9: Turn the pins to the vertical position to unlock the silicone membrane.



Figure 10: Push down *both* membrane release handles *at the same time*.

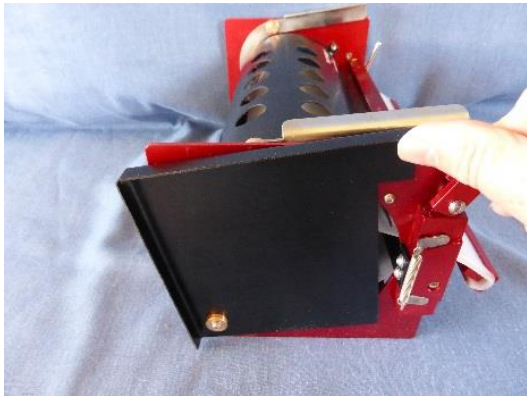


Figure 11: Open the door by releasing the red catch and the rat is now able to come out. Sometimes they are so comfortable they do not want to come out. So a gentle push from the rear-end will help.

For intra-peritoneal injections:

With the rat wrapped as in figures 3-6:



Figure 12: Set up the stand.

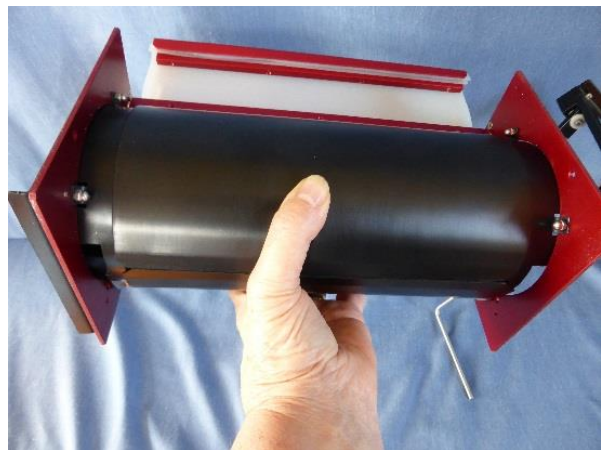


Figure 13: Pick-up the Rat Wrap and turn it upside down (The flap with the holes in it is underneath). Make sure the door end is facing down.

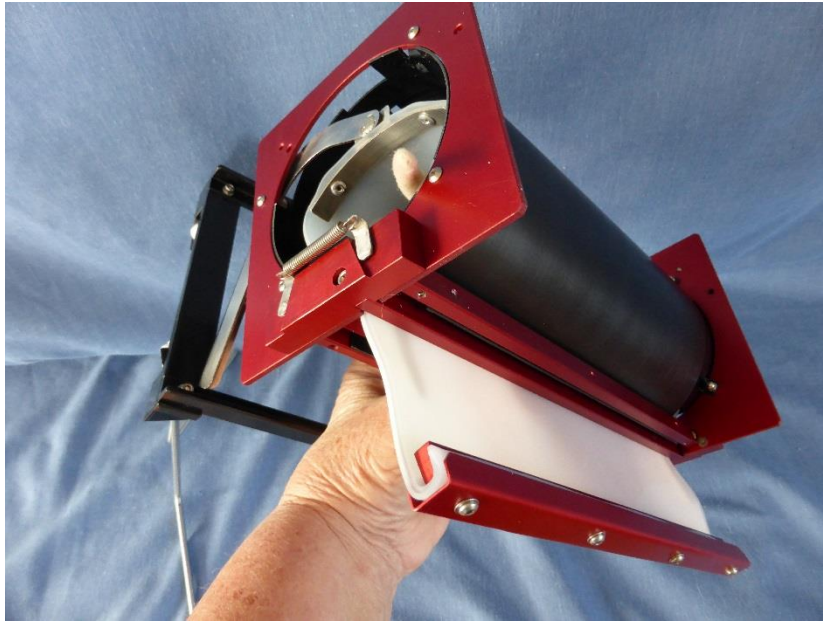


Figure 14: Place the Rat Wrap in the holder. The rat is now positioned on an incline with the head in the downward position, as recommended for intraperitoneal injections, so that the abdominal viscera fall away from the point of needle injection.

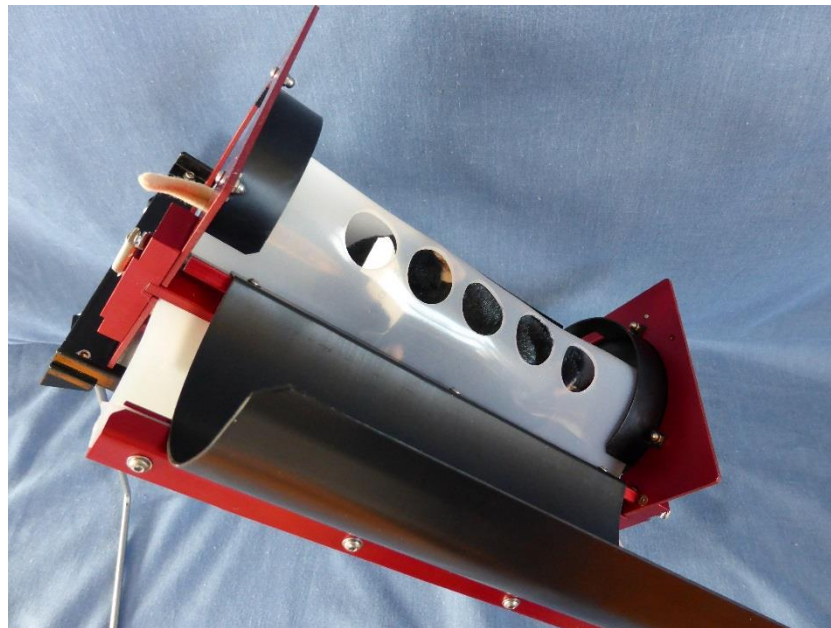


Figure 15: The lower black flap is opened and the rat is now visible.

When injections are completed the flap is replaced to the closed position and the Wrap is taken off the holder and turned back to the upright position. The rat can be released as described in figures 9-11.

For tail vein blood sampling, intravenous injections or tattooing

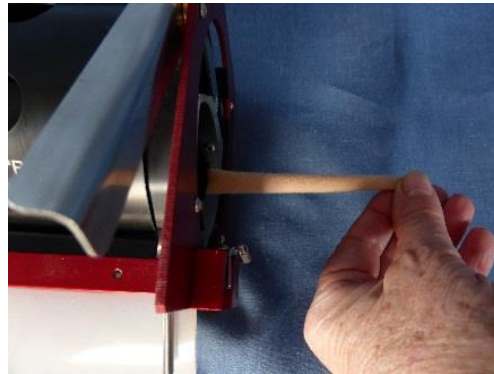


Figure 16: Place a piece of foam rubber in the door end of the wrap so that when the rat enters the tunnel it cannot go all the way to the end.

Introduce the rat to the tunnel and wrap up as described in figures 3-6.

The rat's tail will be extending out the end of the tunnel and will be accessible for blood sampling, injections or tattooing.

When completed release the rat as described in figures 9-11.

Disinfection or sterilisation recommendations:

1. DO NOT use quaternaries for cleaning the Wrap. This chemical will corrode the aluminium frame.
2. Rinse the Wrap in warm soapy water to remove any gross contamination.
3. The Wrap can then be sprayed with 70% alcohol and left to dry.
4. The Wrap can also be autoclaved (121C for 15 minutes).