

## OPERATION INSTRUCTIONS



**Open the lid**, put the items to be cleaned on the tray and put the tray in the tank.

⚠ To avoid scratching the products, do not lap them over.

**Pour water in the stainless steel tank.** The water should cover the surface of the items but the water level should stay between the MIN mark and MAX mark. You may add cleaning agents to the water in order to enhance the cleaning effect. Please make sure you use an appropriate cleaning agent recommended by the manufacturer of your lab equipment.

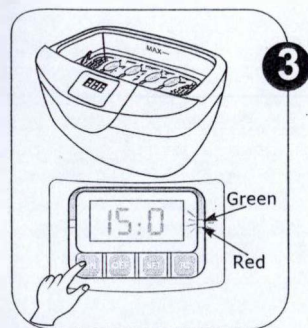


Insert one side of the detachable cord into the body of the machine and connect the plug to the socket. (See picture). Once the unit is plugged in, the green LED light on the right side of the control panel will turn on. The unit is now in standby mode.

Press the ON button to turn the unit on. The default cycle time is 15 minutes. The digital display will show 15:0. To begin the cleaning cycle, press the ON button again. During the cleaning cycle, the time displayed on the screen is the time left. The remaining cleaning time is displayed in a three digit format: MM:S. (Minutes and ten seconds)

If you want to select a different cleaning cycle, press "SET" to choose from 5 preset working cycles:

→ 15:0 → 20:0 → 25:0 → 30:0 → 10:0 minutes



Press the "ON" button to start cleaning while the green indicator light is on.

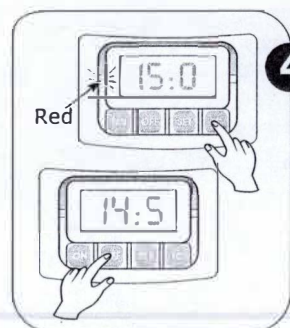
⚠ During cleaning, you can hear a buzzing sound. This means that the unit is working.

When the timer counts down to "000", the unit will automatically stop. You can stop / pause the cleaning process at any time by pressing the OFF button, pressing the ON button again will resume the cleaning and the countdown will continue. When the cleaning cycle has finished, you can repeat the cycle by pressing the ON button again.



This machine has a circuit to prevent overheating. When the red indication light on the right side of the control panel comes on, it means this circuit has been activated.

If the unit is turned on with the ON button, the counting down of cycle time will start but ultrasonic waves will not be generated. Turn the machine off for 15 minutes to let it cool down, then press the ON button again. If the green light is on, the machine can work normally.

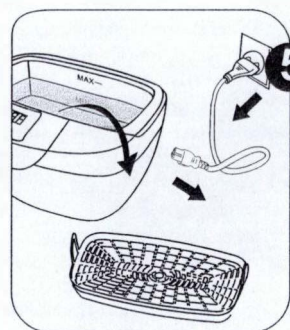


### Using the HEATER function.

Pressing the TC button starts the built in heater. The red LED on the left of the control panel will illuminate. The water will heat to a maximum of 65 C.

The heating can be started any time before or during the cleaning cycle. If you want to take full advantage of the heated cleaning cycle, pre-heat the water or fill the tank with warm, but not boiling, water. Please be aware that the ultrasonic operation will also raise the water temperature.

If required, you can stop / pause the cleaning process at any time by pressing the OFF button, pressing ON again will resume the cleaning and the countdown will continue. The program can be reset at any time by pressing the SET button.



Pressing the OFF button for more than 2 seconds will turn the display off and put the unit in standby mode. When the cleaning is finished, unplug the unit and open the lid, then take out the items. At last, pour out the water from the stainless steel tank and wipe it dry.

P.O. Box 850498  
Braintree MA 02185  
[www.braintreesci.com](http://www.braintreesci.com)

Phone (781) 917-9526  
Fax (978) 244-8917  
[info@braintreesci.com](mailto:info@braintreesci.com)