

Portable Digital Microscope / Camera

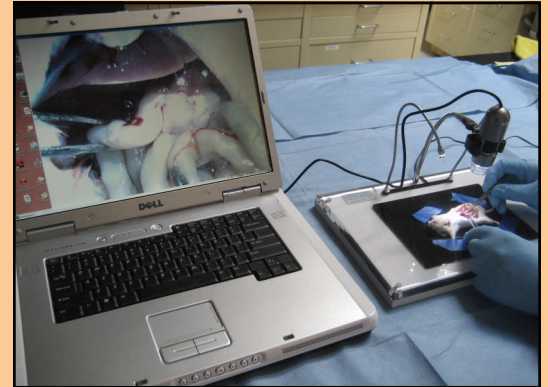
Equip your surgery platform with a portable digital microscope/camera

Ideal for small rodent surgery, demonstrations, dissections & much more !!



Capture

- a photo
- real time video
- time-lapsed video
- project image

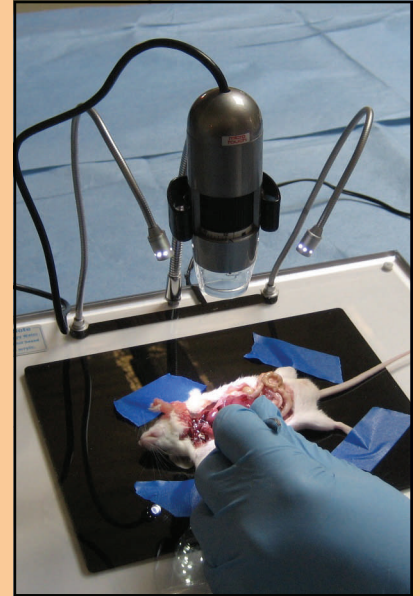
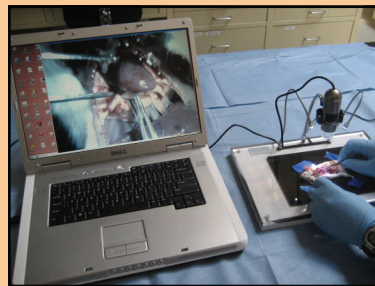


General Features:

- Resolution: 640x480 pixels
- Interface: USB 2.0
- Magnification: 10~200X Continuous
- Sensor: 1/4" Color CMOS
- Video frame Rate: up to 30 frame-per-second
- Illumination: built-in 8 white LEDs
- CD Content: DinoCapture application software, User's manual
- Compatible Windows 2000/XP, Vista and most MAC OS
- The USB connection eliminates the need for interface cards or expensive software
- The software for the collection and processing of photos is included
- Software is easy and convenient to load and use
- Automatic or manual color balance and control
- Automatic or manual brightness control

Product Requirements:

- Windows 20Intel Pentium III 1GHz00/XP,
- Vista processor or faster
- 256 MB RAM
- CD-ROM drive
- 16-bit color display monitor or higher
- Available Hi-speed USB 2.0 Port



ORDER:

PDMC Digital Microscope/Camera

Includes: Mounting Bracket (DMCB), DinoCapture software, USB 2.0 extension

DMCB Bracket for Microscope/Camera (PDMC)

TSPCK Thermo Surgery Platform/Camera Kit

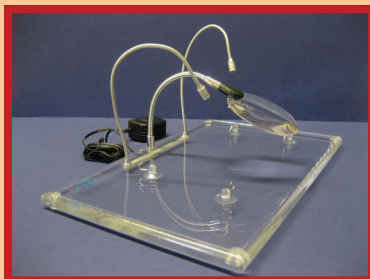
Includes: Thermo Surgery Platform with gel-pads, Digital Microscope/Camera, Mounting Bracket (DMCB), DinoCapture Software, USB 2.0 Extension, Gel Pad Reactivation Unit.

SSPCK Standard Surgery Platform/Camera Kit

Includes: Standard Surgery Platform, Digital Microscope/Camera, Mounting Bracket (DMCB), DinoCapture Software, USB 2.0 Extension.

Surgery Platforms

Surgery Platform



Dissections
Made Easy!



USE: Can be used for surgery, micro manipulations, general micro-utility platform (i.e. organ inspections, dissections, etc).

- Two Flexible LED lights - provides direct illumination with no shadows and no heat.
- Flex arm, non-obstructive rimless magnifying glass (main lens: 2.3 X, inset lens: 4.0 X). (Allows continuous eye contact with object when moving into magnification area).
- Limb restraints, Non-skid feet for added stability.

Size: 9" X 13.5", Universal power supply (100 – 240 VAC, 50-60 Hz).

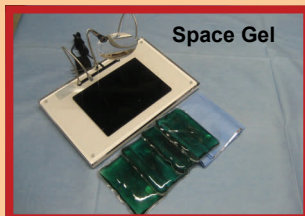
ORDER: ASS7 Surgery Platform,

- **Add a dissection tray to your platform for detailed dissections!** **ORDER: DTW1 Dissection Tray (9.5" x 7" x 1"),**
ORDER: DTW5 Dissection Tray, 5 pack

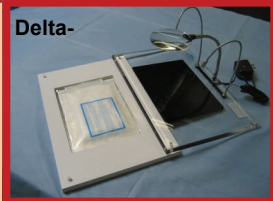
Wax base pinning surface
.....easy to secure your animal.



Thermo Controlled Surgery Platform



Delta-



- Two Flexible LED lights - provides direct illumination with no shadows and no heat.
- Flex arm, non-obstructive rimless magnifying glass (main lens: 2.3 X, inset lens: 4.0 X). (Allows continuous eye contact with object when moving into magnification area)
- 4 Space Gels or 2 Deltaphase® Pads for continuous heat, 2 Space Blankets to retain heat.
- Thermo Reflector & Turbo Heat Sink to maximize heat transfer.
- Limb restraints, Non-skid feet for added stability.
- Size: 13.5" (L) x 9" (W) Universal power supply (100 – 240 VAC, 50-60 Hz).

ORDER: ASS7T Thermo Control Surgery Platform (w/ Space Gels),

SPGL Space Gel Pad,
SPDR Space Drape (12"x16", 2/pk)

ORDER: ASS7D Thermo Control Surgery Platform (w/ Deltaphase® Pads),

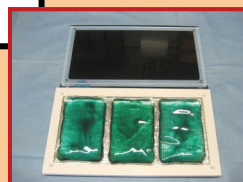
DPIP Deltaphase® Isothermal Pad (microwave activation)

Ultra-Safe Thermo Regulation:

- will not over heat animal
- will not burn animal
- no electricity used
- no bulky water bath
- no water bed effect

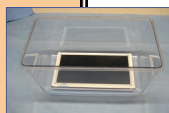
Maintain Animal Body Temperature During Surgery !

Thermo Recovery Platform



- Convenient size 13.5" (L) x 7.5" (w), provides over 2 hrs of heat.
- 6 Space Gels for continuous heat, 4 Space Blankets to retain heat.
- Thermo Reflector and Turbo Heat Sink to maximize heat transfer.
- Fits into a standard 18 (L) x 9 (W) shoe box cage.

Animal Recovery Made Simple and Easy !



Gel Pad Reactivation

Small size is ideal for lab bench 12" (L) x 10" (W) x 8.5" (H).

Easily reactivate four gel pads in a single run, (Place in chamber, start, remove pads after 15 min)

Safe and easy to operate **ORDER: GPRU Gel Pad Activation Unit**

Quick, Easy, Safe

All text and graphic are © 2006 by Animal Identification and Marking Systems, Inc., All rights reserved. No text or graphics may be copied or used without the written permission from Animal Identification and Marking Systems, Inc. Prices subject to change without notice.