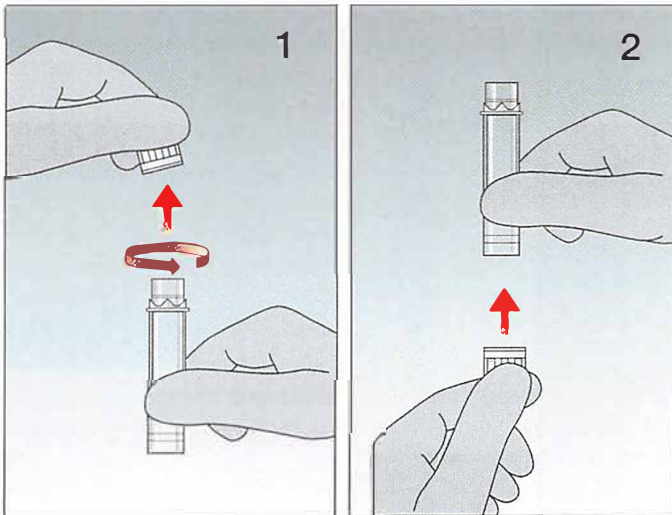
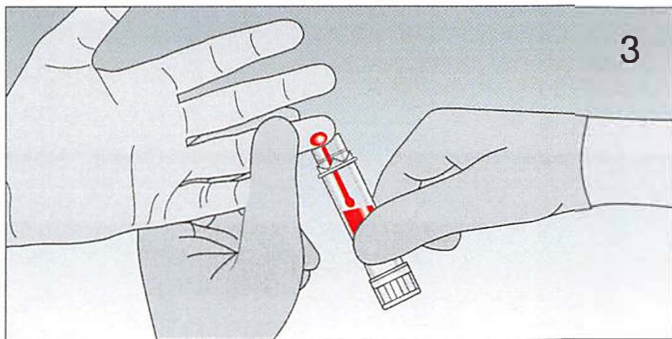


# Microvette® 300/500

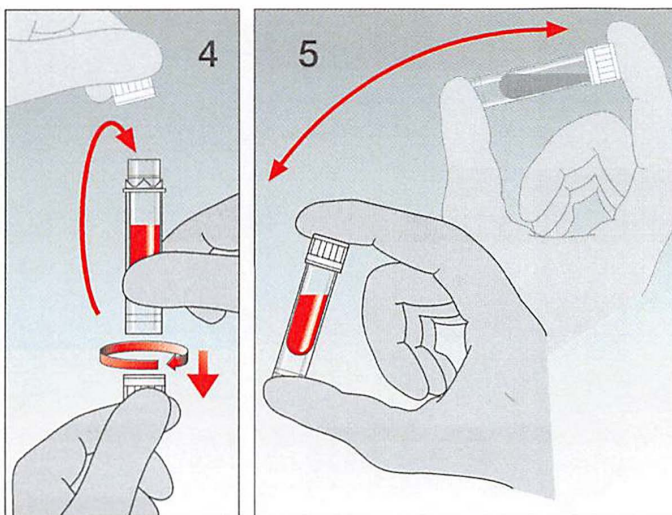


1) Turn the cap to remove it from the Microvette®.



2) Attach the cap to the base of the Microvette®.

3) Collect blood by gravity-flow using any part of the collection rim.



4) Remove the cap from the base and seal the Microvette® ('click' position).

5) Mix sample thoroughly by inverting the Microvette®.

Technical modifications reserved