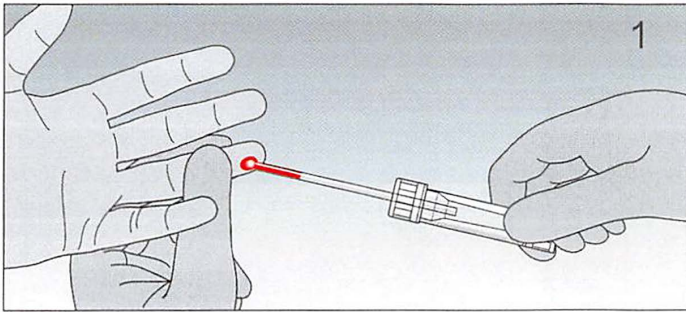
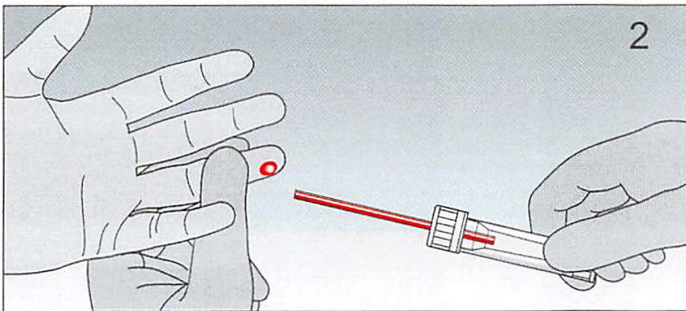


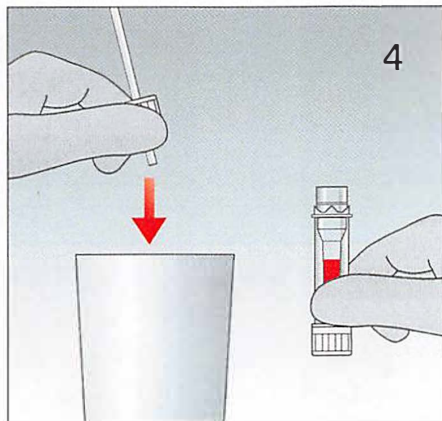
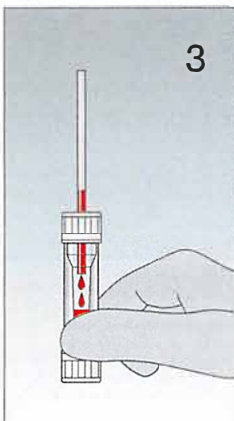
Microvette® 100/200



- 1) Collect blood with the assembled End-to-End 100ul or 200 u μ l capillary. For collection, best results are achieved if the Microvette® is held in horizontal or slightly inclined position.

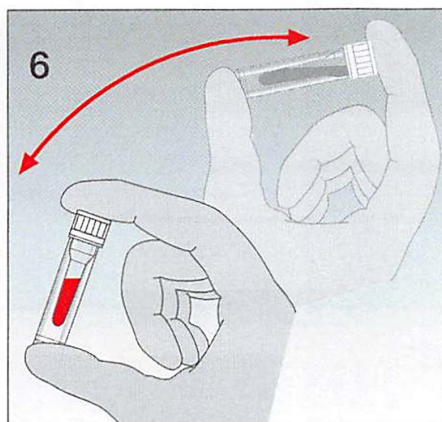
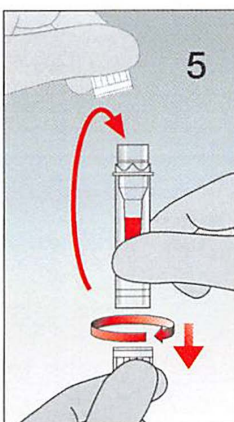


- 2) Collection is complete when the End-to-End capillary is entirely filled with blood.



- 3) Hold the tube upright to allow the blood to flow from the capillary into the Microvette®.

- 4) Turn the cap to remove and discard the preassembled capillary as one unit.



- 5) Remove the cap from the base and seal the Microvette® ('click' position).

- 6) Mix sample thoroughly by inverting the Microvette®.

All patient blood specimens should be treated with standard precautions. Always wear gloves!