

### Points to note during cleaning

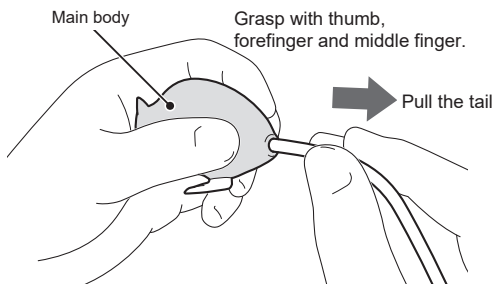
- Do not use solvents such as thinner to clean the mouse. Doing so might damage the mouse body.
- Do not sterilize the mouse in an autoclave. Doing so might damage the mouse body.
- Store the parts in a cool, dark place away from high temperatures, high humidity and direct sunlight.

### Removing the tail

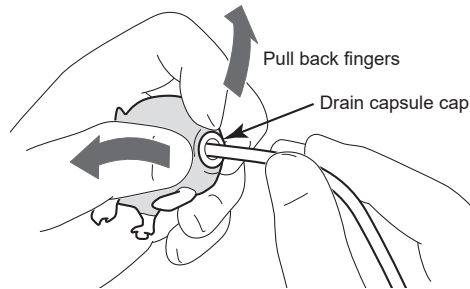
When draining the liquids which have been injected into the tail veins or when replacing the tail, remove the tail by the following procedure.

**! CAUTION** If the tail is difficult to remove, it is possible that the inside of the mouse has dried out. In this case, apply special lubricant through the base of the tail and the mouse's mouth to improve the slipperiness. (Do not forcibly pull out the tail, otherwise it may damage the tail mounting hole of the mouse's body.) If the tail still cannot be removed properly, please return it to Sankyo Labo Service.

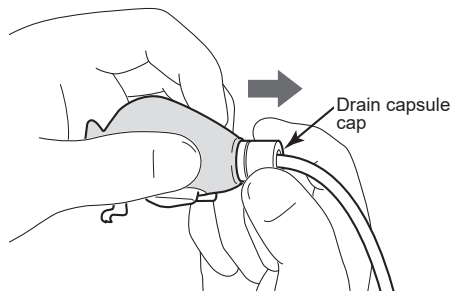
**1** Grasp the mouse's body near the base of the tail with your thumb, forefinger and middle finger. With your other hand, gently pull out the tail.



**2** When the cap of the drain capsule becomes visible, pull back the fingers which are grasping the mouse's body to expose the capsule.

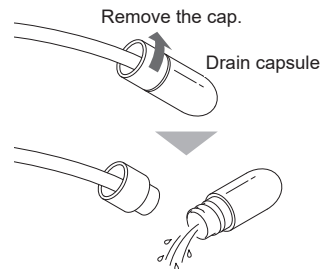


**3** When the cap of the drain capsule is fully exposed, grasp the cap instead of the tail, and gently pull out the tail.



**! CAUTION** The area of the mouse's body around the tail is extremely delicate, so be very careful when removing the tail.

**Note** Remove the cap from the drain capsule when removing the liquid inside the capsule.



# Mimicky Mouse

## Instruction Manual



**Please handle this product gently as if it were a real mouse!**  
- Let's cultivate a heart that takes care of experimental animals -

Please check the contents of this package immediately after purchase. If any components are damaged or missing, please contact Sankyo Labo Service or the place of purchase immediately.

Contents	Foreword	1	Preparation before use	2
	Points to note during handling	1	Points to note during practice	3
	Product outline	1	Cleaning	3
	Product parts (and accessories)	2	Removing the tail	4

### Foreword

Thank you for purchasing this Sankyo Labo Service mouse simulator. Please be sure to read this instruction manual before use, and follow the instructions for correct use. Keep this manual in a safe place together with the mouse.

### Points to note during handling

- The main body has an extremely fine structure, and is made using materials that make it feel just like a live mouse. Be sure to observe the following to avoid damage and deterioration.
  - \* Do not pull or twist it firmly.
  - \* Do not touch it with sharp objects such as cutter knives or needles.
  - \* Be sure to follow the procedures given in "Cleaning" (P.3).
- Use only the special lubricant which is included as an accessory. Using any other type of lubricant may cause rapid deterioration of the mouse.
- Always wear gloves when handling the mouse to prevent dust or dirt from adhering to the mouse. (During practice, this will also improve the sensation of carrying out an actual test.)

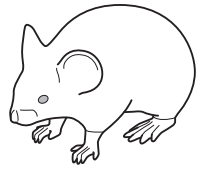
### Product outline

This product is a simulator which is designed to imitate an experimental animal (a mouse). It recreates the feeling of handling a live mouse, and can be used for the following simulated practice.

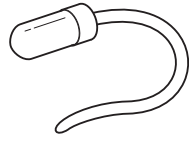
- (1) Retaining
- (2) Oral administration
- (3) Tail vein administration
- (4) Intraperitoneal administration (until retaining)

**Note** The mouse can be used for a wide range of other practice activities in addition to those listed above.

## Product parts (and accessories)



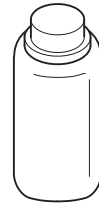
Main body x1



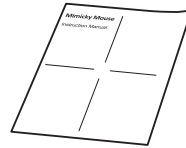
Tail x1



Special lubricant  
x1



Baby powder  
x1



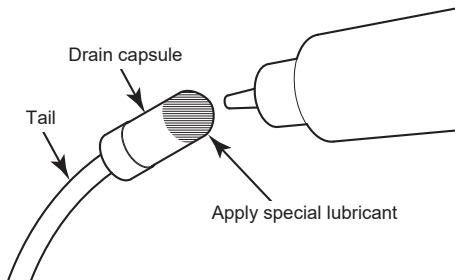
Instruction manual  
(this document)  
x1

## Preparation before use

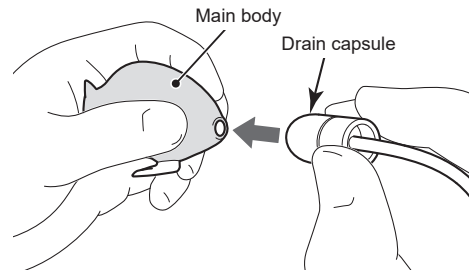
Carry out the following preparation before using the mouse.

### Installing the tail

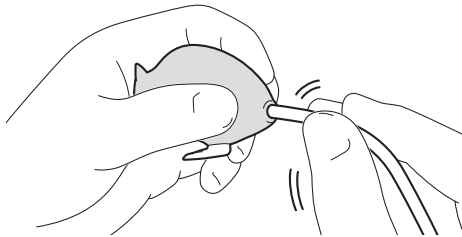
- 1 Apply a small amount of the special lubricant to the drain capsule.



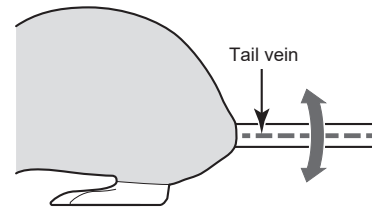
- 2 Gently insert the drain capsule into the hole in the rear of the mouse, while pressing around it with your thumb, forefinger and middle finger.



- 3 After inserting the drain capsule all the way, gently pull the tail and check that it does not pull out from the mouse body.



- 4 Turn the tail so that the tail veins are on each side.



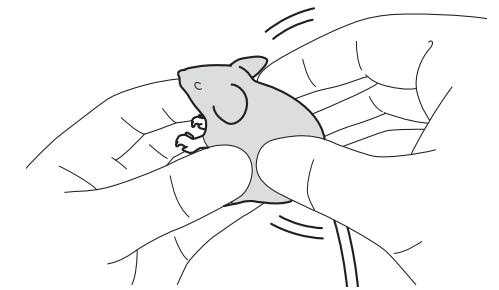
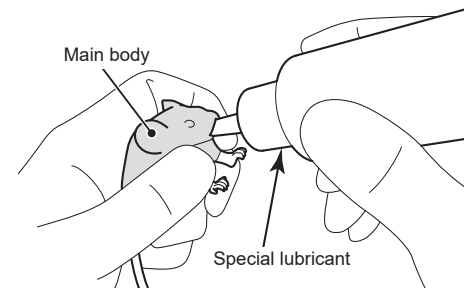
(Continued on next page)

(Preparation before use [continued])

### Adding special lubricant

In order to accurately reproduce the feeling of a live mouse, this mouse simulator should be filled with the accessory special lubricant before use. Follow the procedure below to fill the mouse body with lubricant.

- 1 Squeeze the special lubricant from the bottle directly into the mouth of the mouse. (About 0.1 to 0.2 ml)
- 2 Gently squeeze the mouse to disperse the lubricant throughout the inside of its body.



**Note** The lubricant which is squeezed into the mouse will leak onto the surface of the mouse while it is being used, and will dry out there. When using the mouse each time, and also if the surface dries out, add more lubricant.

### Points to note during practice

Be sure to observe the following when carrying out simulation training.

#### For oral administration

- When carrying out simulation training, insert the instrument as far as the lubricant, but do not let the chemicals or water get inside the mouse's body.

#### For tail vein administration

- Chemicals and water can be injected. After injecting, remove the liquid from the drain capsule by following the procedure in "Removing the tail" (P.4).
- If injections are carried out repeatedly and too many holes develop in the tail, you can purchase a replacement "Mimicky tail", and replace the old tail by following the procedure in "Removing the tail" (P.4).

#### For intraperitoneal administration

- Carry out simulation training as far as holding the mouse, but do not inject it. Injection needles will damage the body of the mouse.

### Cleaning

#### Cleaning after use

- 1 Gently rinse the body in water, or clean it with neutral detergent and then wipe it dry with a soft cloth.
- 2 Sprinkle a small amount of the accessory baby powder onto the body, remove the tail (refer to "Removing the tail" (P.4)), and place the parts in the special case for storage.

(Continued on next page)