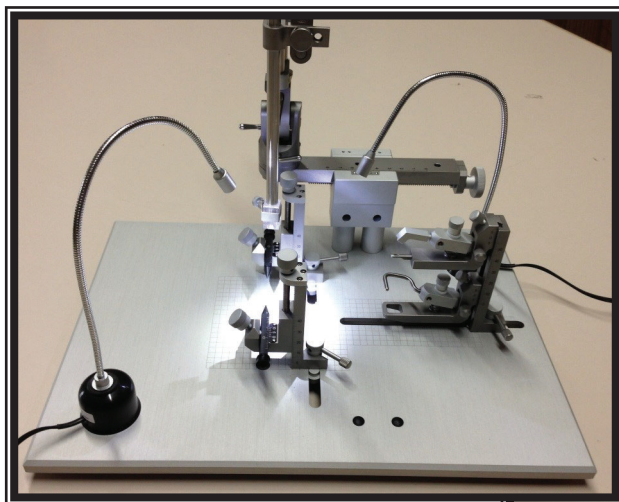


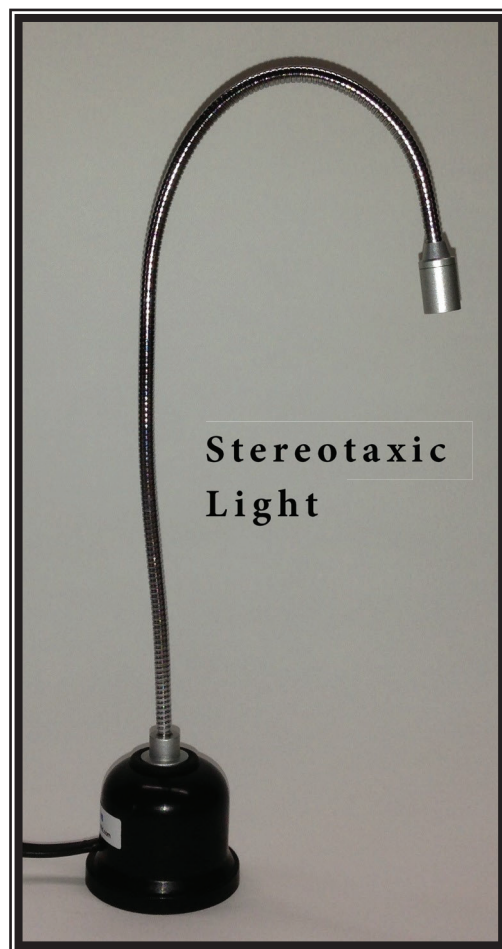
NEW

Stereotaxic Light

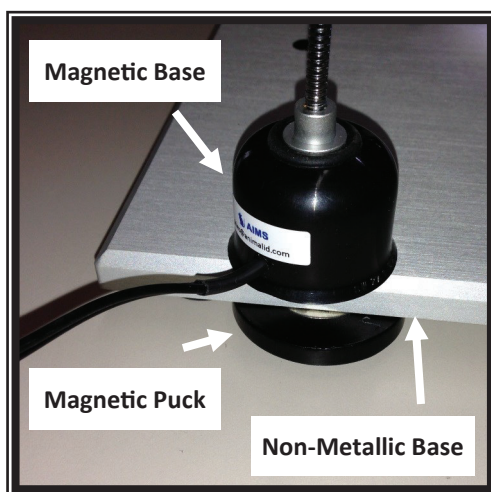
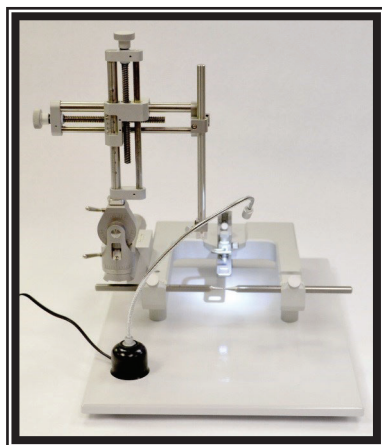
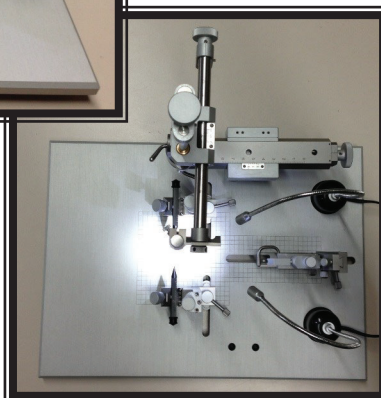
Attach to Stereotaxic Base.



Unique magnetic base/puck system holds the lab light firmly on the base in any location.



Attach to Wall



Unique magnetic base/puck system allows the lab light to attach to non-metallic surfaces.

- Ultra Bright LED on 10" Flex Arm.
- Ultra Strong Magnetic Base/Puck System to Anchor Light on Non-Metallic Surfaces.
- Attaches Directly to Metallic Surfaces.
- Universal Power Supply (110-220 V).
- Small Base (1 5/8" dia.)



Plug the lab light into the On/Off Plug Switch for easy on/off operation.

Cat#

LL13

LLSW

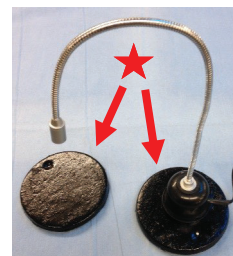
SBL

Description

Stereotaxic Lab Light

On/Off Plug Switch

Steel Base for Bench



Use LED light, Magnifier, or Multi-Device Flex arm on any bench by attaching to **steel base**

