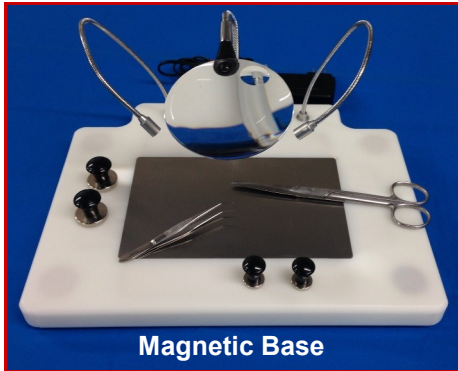


*Grace
Boards*

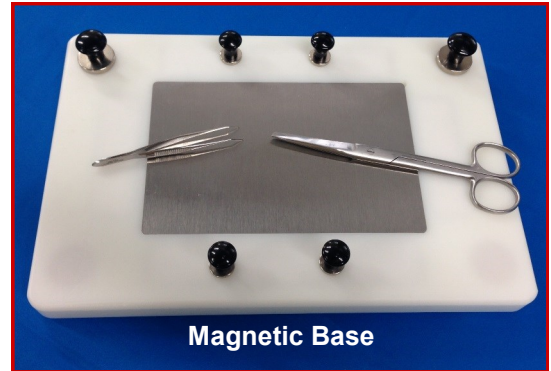
*The New Standard for small animal surgery, procedure,
& dissection platforms*

Small Animal Surgery Boards
Warming Thermal Plate or Cooling Hypothermic Plate



Magnetic Base

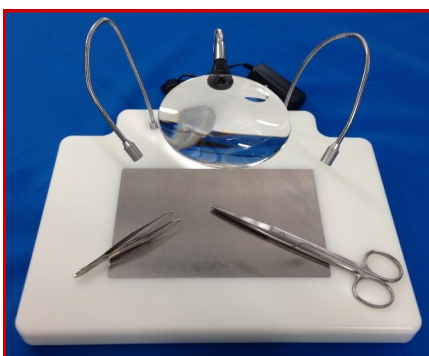
Cat#: **GSM2**



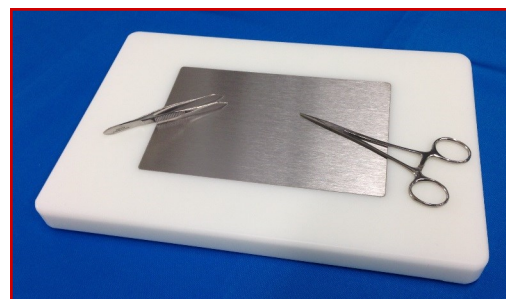
Magnetic Base

Cat#: **GSM1**

<u>Cat#</u>	<u>Description</u>
<u>GSM2</u>	<i>Grace Surgery Board w/ LED, Magnifier, & Magnetic Base System</i> Two Flexible LED lights - provides direct illumination with no shadows and no heat. Flex arm, non-obstructive rimless magnifying glass (main lens: 2.3X, inset lens: 4.0X). (Allows continuous eye contact with object when moving into magnification area). Non-skid feet for added stability. Universal input power supply (100 – 240 VAC, 50-60 Hz). Size: 12" (L) x 9.5" (W), Includes 1x Magnetic Stainless Steel Warming Plate (7" x 4"), 1 Space Gel Heating Pad, & Suction cup limb restraints. Includes Magnetic Base System.
<u>GSS2</u>	<i>Grace Surgery Board w/ LED, & Magnifier</i> Two Flexible LED lights - provides direct illumination with no shadows and no heat. Flex arm, non-obstructive rimless magnifying glass (main lens: 2.3X, inset lens: 4.0X). (Allows continuous eye contact with object when moving into magnification area). Non-skid feet for added stability. Universal input power supply (100 – 240 VAC, 50-60 Hz). Size: 12" (L) x 9.5" (W), Includes 1x Magnetic Stainless Steel Warming Plate (7" x 4"), 1 Space Gel Heating Pad, & Suction cup limb restraints. Does <u>not</u> include Magnetic Base System.
<u>GSM1</u>	<i>Grace Surgery Board w/ Magnetic Base System</i> Non-skid feet for added stability. Size: 12" (L) x 8" (W), Includes 1x Magnetic Stainless Steel Warming Plate (7" x 4"), 1 Space Gel Heating Pad, & Suction cup limb restraints.. Includes Magnetic Base System.
<u>GSS1</u>	<i>Grace Surgery Board</i> Non-skid feet for added stability. 12" (L) x 8" (W), Includes 1x Magnetic Stainless Steel Warming Plate (7" x 4"), 1 Space Gel Heating Pad, & Suction cup limb restraints.. Does <u>not</u> include Magnetic Base System.



Cat#: **GSS2**

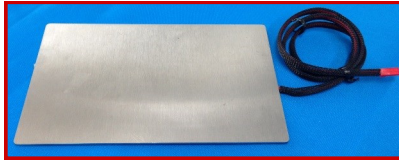


Cat#: **GSS1**

Accessories for *Grace* Small Animal Surgery Boards

Thermal Plate Heating Options

Electric Powered Thermal Plate, Variable Temp Controller, Single Temp Power Supply (30°C, 34°C, or 38°C), Heating Gel Pad



DC Powered Thermal Plate

Cat#: **GETP**

Use with Cat#: GVT1,
GPS1, GPS2, GPS3



Variable Temp Controller

Set any plate temp.

Cat#: **GVT1**

Use with Cat#: GETP



Single Temp Power Supply

Provides a single constant plate temp.

30°C, Cat#: **GPP1**

34°C, Cat#: **GPP2**

38°C, Cat#: **GPP3**

Use with Cat#: GETP, *NOTE: Final plate temp is dependent on room temp.*

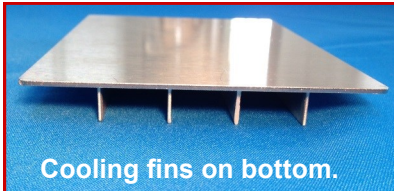


Space Gel Heating Pad

33-34°C

Cat#: **GGP1**

Can be reactivated. Use with standard thermal plate.



Cooling fins on bottom.

Hypothermic Cooling Plate

Use with ice, 3-4°C

Cat#: **GBHP**

Magnetic Base System Options

LED Light, Magnifier, Drape Holders, Limb Restraints



Large Magnetic Drape Holders

Set of 4

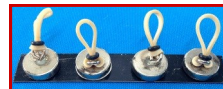
Cat#: **GDHL**



Small Magnetic Drape Holders

Set of 4

Cat#: **GDHS**



Magnetic Limb Restraints

Set of 4

Cat#: **GLR1**

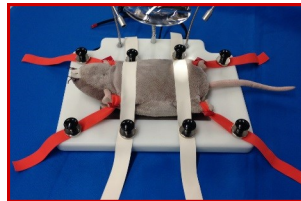


Elastic Hold Downs

Set of 6 orange with loop hole, 9"L x 3/4" W

Set of 4 white straps, 17"L x 1"W

Cat#: **GEHD**



Magnetic Ultra Bright LED Light

Universal input power supply
(100 – 240 VAC, 50-60 Hz)

Cat#: **GLED**

Magnetic Magnifier

(main lens: 2.3X, inset lens: 4.0X).

Cat#: **GMAG**



Thermal Drape

foil lined surgical drape
maintain proper body temp
2/pk (12"x16")

Cat#: **GBTD**

 **BRAINTREE
SCIENTIFIC, INC.**

Your Distributor is:

Braintree Scientific, Inc.

PO Box 850498, Braintree, MA 02185

781-917-9526

Email: Info@braintreesci.com

Web: www.braintreesci.com