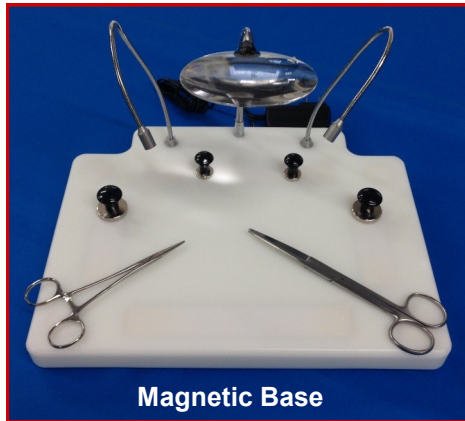


*Grace
Boards*

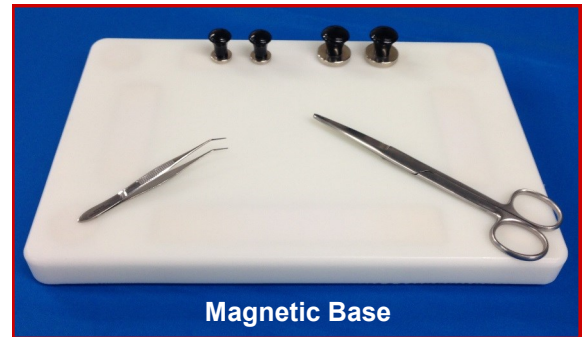
*The New Standard for small animal surgery, procedure,
& dissection platforms*

Procedure / Dissection Boards

Grace Boards are made of 1" thick High Density Polyethylene (HDPE) with excellent chemical resistance.

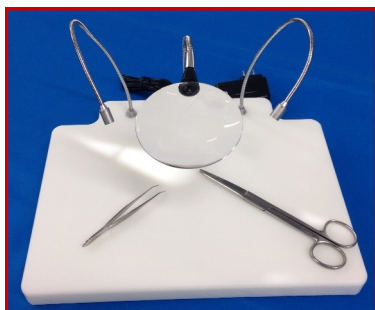


Cat#: **GPM2**

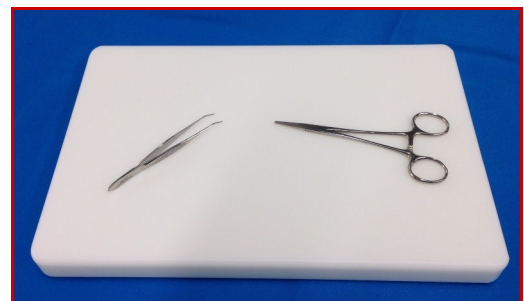


Cat#: **GPM1**

<u>Cat#</u>	<u>Description</u>
<u>GPM2</u>	<i>Grace Procedure/Dissection Board w/ LED, Magnifier, & Magnetic Base System</i> Two Flexible LED lights - provides direct illumination with no shadows and no heat. Flex arm, non-obstructive rimless magnifying glass (main lens: 2.3X, inset lens: 4.0X). (Allows continuous eye contact with object when moving into magnification area). Non-skid feet for added stability. Universal input power supply (100 – 240 VAC, 50-60 Hz). Size: 12" (L) x 9.5" (W), includes the Magnetic Base System.
<u>GPS2</u>	<i>Grace Procedure/Dissection Board w/ LED, & Magnifier</i> Two Flexible LED lights - provides direct illumination with no shadows and no heat. Flex arm, non-obstructive rimless magnifying glass (main lens: 2.3X, inset lens: 4.0X). (Allows continuous eye contact with object when moving into magnification area). Non-skid feet for added stability. Universal input power supply (100 – 240 VAC, 50-60 Hz). Size: 12" (L) x 9.5" (W), does <u>not</u> include the Magnetic Base System.
<u>GPM1</u>	<i>Grace Procedure/Dissection Board w/ Magnetic Base System</i> Non-skid feet for added stability. Size: 12" (L) x 8" (W), includes the Magnetic Base System.
<u>GPS1</u>	<i>Grace Procedure/Dissection Board</i> Non-skid feet for added stability. 12" (L) x 8" (W), does <u>not</u> include the Magnetic Base System.



Cat#: **GPS2**



Cat#: **GPS1**

Accessories for *Grace* Procedure / Dissection Boards



Large Magnetic Drape Holders

Set of 4

Cat#: **GDHL**



Small Magnetic Drape Holders

Set of 4

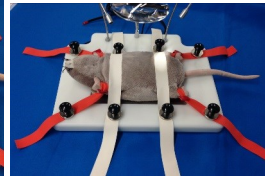
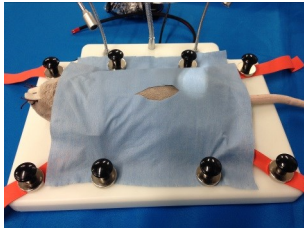
Cat#: **GDHS**



Magnetic Limb Restraints

Set of 4

Cat#: **GLR1**

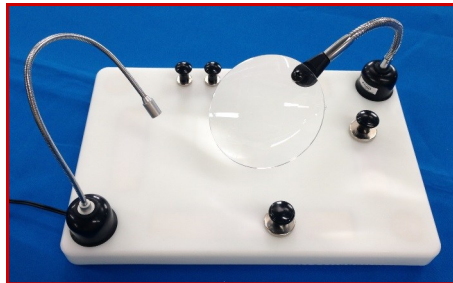


Elastic Hold Downs

Set of 6 orange straps w/ loop hole, 9"L x 3/4"W

Set of 4 white straps, 17"L x 1"W

Cat#: **GEHD**



Magnetic Ultra Bright LED Light

Universal input power supply

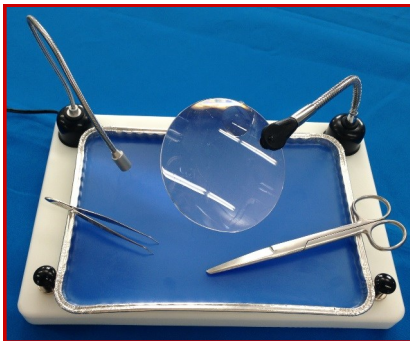
(100 – 240 VAC, 50-60 Hz)

Cat#: **GLED**

Magnetic Magnifier,

(main lens: 2.3X, inset lens: 4.0X).

Cat#: **GMAG**

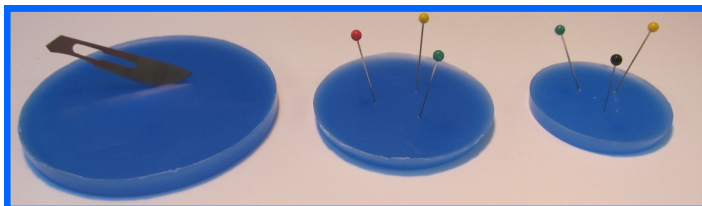


Blue Wax Dissection Tray

"A Green Product"

9"L x 6.5"W

Cat#: **GBDT**



Cat#: **LTPD**

Large Tissue Processing Disc (4" dia., 1/4" thick, 10/pk)

Cat#: **MTPD**

Medium Tissue Processing Disc (2 3/4" dia., 1/4" thick, 10/pk)

Cat#: **STPD**

Small Tissue Processing Disc (2" dia., 1/4" thick, 10/pk)

Cat#: **TPIN**

Ball Head Tissue Pins, ss (1 1/2" long, 50/pk)

**BRAINTREE
SCIENTIFIC, INC.**

Your Distributor is:

Braintree Scientific, Inc.

PO Box 850498, Braintree, MA 02185

781-917-9526

Email: Info@braintreesci.com

Web: www.braintreesci.com