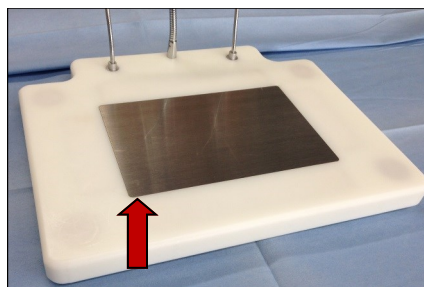
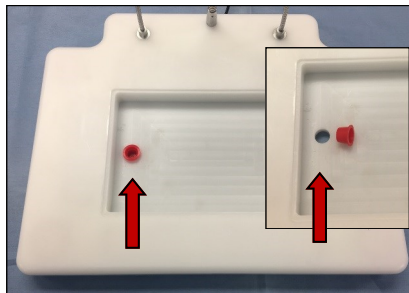


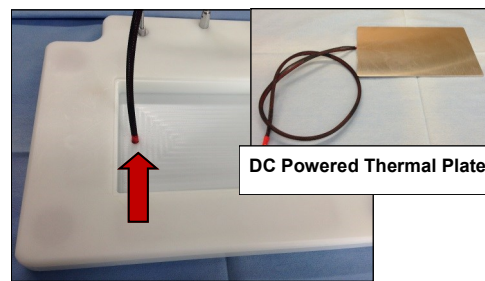
## Grace Surgery Board Heating Plate Instructions



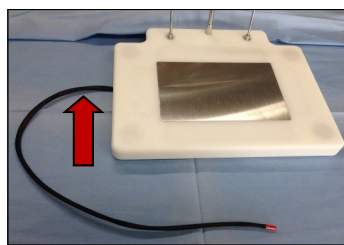
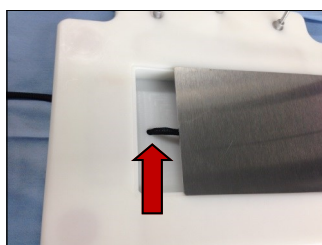
1. Remove Standard Plate



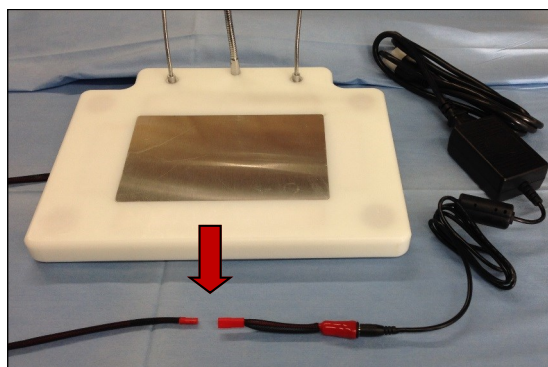
2. Remove Red plug  
 (save red plug for future use)



3. Insert power cord from heating plate



4. Gently guide cord thru hole and place heating plate in recess



5. Connect heating plate to power supply



### Single Temp Power Supply

~31°C, Cat#: **GPP1**

~36°C, Cat#: **GPP2**

~41°C, Cat#: **GPP3**

NOTE: Above temperatures are approximate and will be influenced by YOUR ROOM CONDITIONS.

### Variable Temp Controller - Ca#: **GVT2**



Use key  
 To  
 Adjust Voltage



### Voltage vs Temp

5V = ~31°C • 6V = ~35°C • 7.5V = ~45°C

Adjust thermal plate temperature using the voltage adjustment dial.

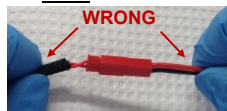
The higher the voltage the warmer the thermal plate.

**CAUTION** : The plate can become "hot" using voltages above 7.5 v.

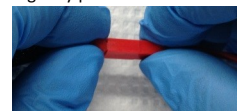
Your Distributor is:  
 Braintree Scientific, Inc.  
 PO Box 850498, Braintree, MA 02185  
 781-917-9526  
 Email: [Info@braintreesci.com](mailto:Info@braintreesci.com)  
 Web: [www.braintreesci.com](http://www.braintreesci.com)

### Disconnecting DC Thermal Plate from Power Supply

Do NOT pull on  
 cables to disconnect.



Hold plastic connector and  
 gently pull to disconnect.



### CAUTION

- \* Establish heating plate temperature for power supply prior to placing animal on heating plate.

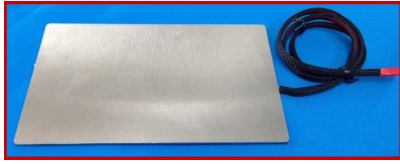
### IMPORTANT NOTE:

*Room conditions will effect heating plate temp.*

- \* Heating plate temp must be continuously monitored.
- \* Animal body temp must be continuously monitored.
- \* DO NOT leave animal unattended on heating plate.

## Thermal Plate Heating Options

Electric Powered Thermal Plate, Variable Temp Controller, Single Temp Power Supply, Heating Gel Pad



**DC Powered Thermal Plate**

Cat#: **GETP**  
Use with Cat#: GVT2,  
GPP1, GPP2, GPP3



**Variable Temp Controller**  
~31°C, ~35°C~45°C.

Cat#: **GVT2**  
Use with Cat#: GETP

**NOTE:** Final plate temp is dependent on room temp.



**Single Temp Power Supply**  
Provides a single constant plate temp.

~31°C, Cat#: **GPP1**  
~36°C, Cat#: **GPP2**  
~41°C, Cat#: **GPP3**

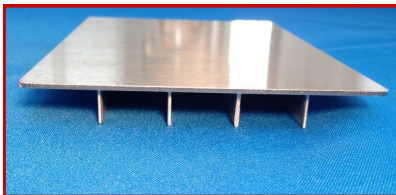
Use with Cat#: GETP

**NOTE:** Final plate temp is dependent on room temp.



**Space Gel Heating Pad**  
33-34°C

Cat#: **GGP1**  
Can be reactivated. Use with standard plate.

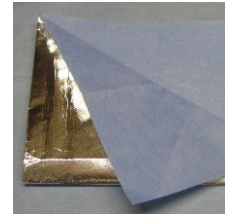


**Hypothermic Cooling Plate**

Use with ice, 3-4°C

Cat#: **GBHP**

**Thermal Drape**  
foil lined surgical drape  
maintain proper body temp  
2/pkg (12"x16")  
Cat#: **GBTD**



### Accessories for Magnetic Base System

LED Light, Magnifier, Drape Holders, Limb Restraints



**Large Magnetic Drape Holders, Set of 4**

Cat#: **GDHL**



**Small Magnetic Drape Holders, Set of 4**

Cat#: **GDHS**



**Magnetic Ultra Bright LED Light**

Universal input power supply  
(100 – 240 VAC, 50-60 Hz)

Cat#: **GLED**

**Magnetic Magnifier,**  
(main lens: 2.3X, inset lens: 4.0X).

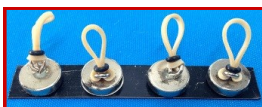
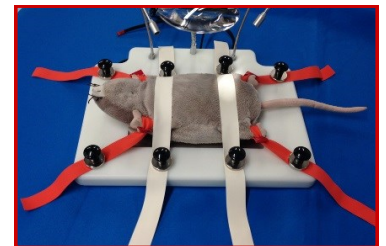
Cat#: **GMAG**



**Elastic Hold Downs**

Set of 6 orange with loop hole, 9"L x 3/4" W  
Set of 4 white straps, 17"L x 1 "W

Cat#: **GEHD**



**Magnetic Limb Restraints**

Set of 4

Cat#: **GLR1**



**BRAINTREE**  
**SCIENTIFIC, INC.**  
LAB RESEARCH PRODUCTS