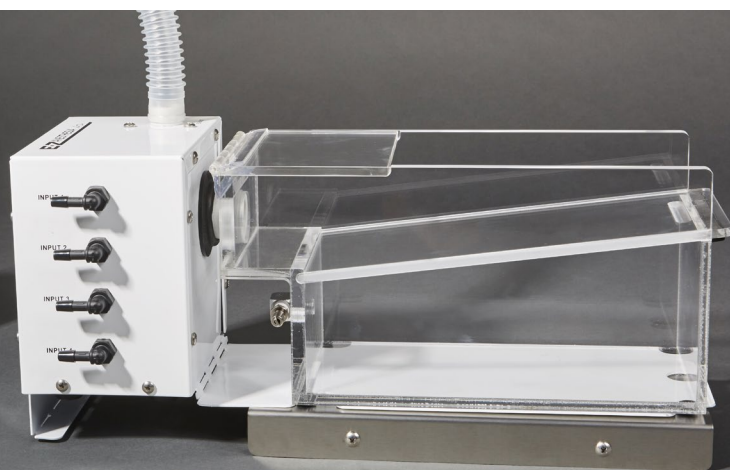




EX-IC Exhaust Cube

The EX-IC features an internal blower that captures waste gas from our vented chamber and up to four breathing devices. Calibrated specifically for small animal anesthesia applications, the EX-IC will safely capture waste gas without pulling fresh gas away from the animal. The device has a 22mm exhaust port that can be used with a charcoal filter or routed to a fume hood. Designed for use with the EZ-170 Vented Chamber.



HB-163 Chamber Warmer

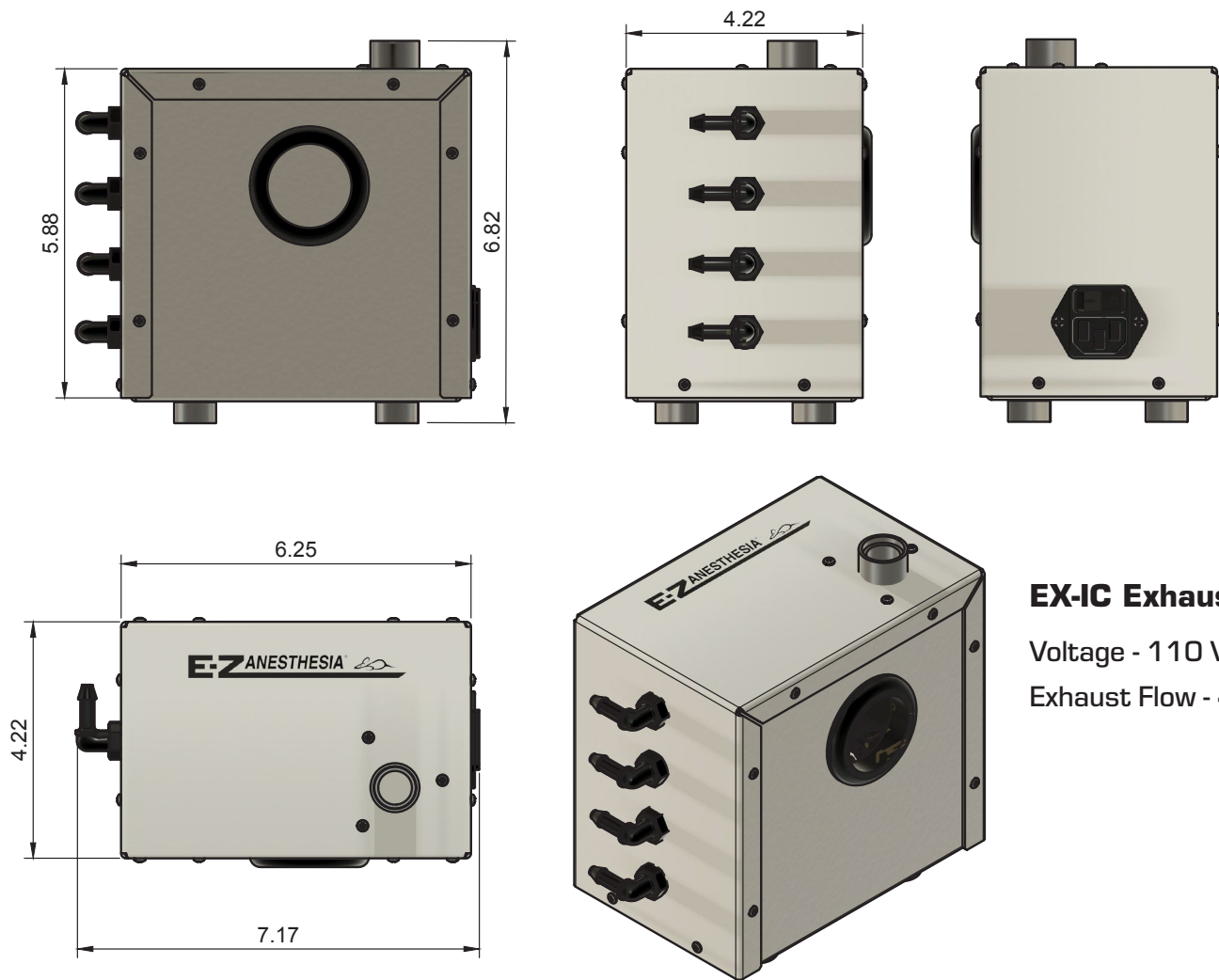
Add heat to your EX-IC setup. The HB-163 chamber warmer ranges from 85 to 104 degrees Fahrenheit. For use with the EZ-HEAT Surgical Bed Warming System.

Your Distributor is:
Braintree Scientific, Inc.
PO Box 850498, Braintree, MA 02185
781-917-9526
Email: Info@braintreesci.com
Web: www.braintreesci.com



EZ-170 Vented Chamber

The EZ-170 vented chamber is designed to be used with the EX-IC Exhaust cube. This chamber is designed to control waste gas without a "chamber flush". As the chamber is opened, the exhaust cube will capture any waste gas that escapes. The chamber is constructed out of 3/8" acrylic and includes a simple flip top for easy placement and removal of larger patients.

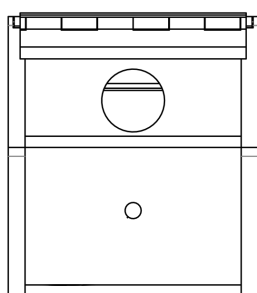


EX-IC Exhaust Cube

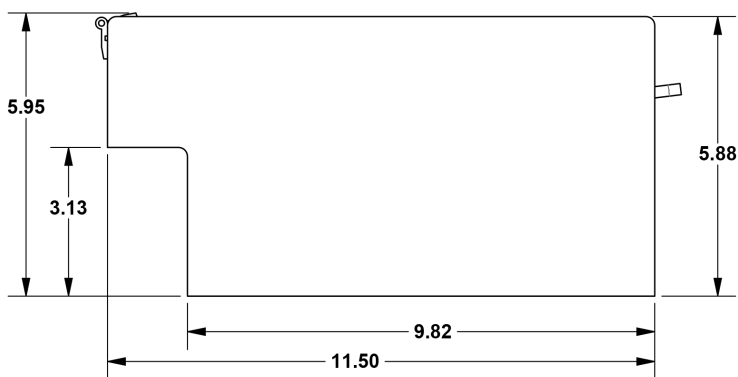
Voltage - 110 VAC

Exhaust Flow - 4.5 CFM

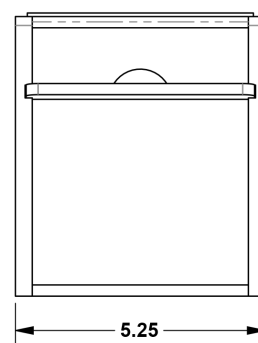
EZ-170 Vented Chamber



BACK VIEW



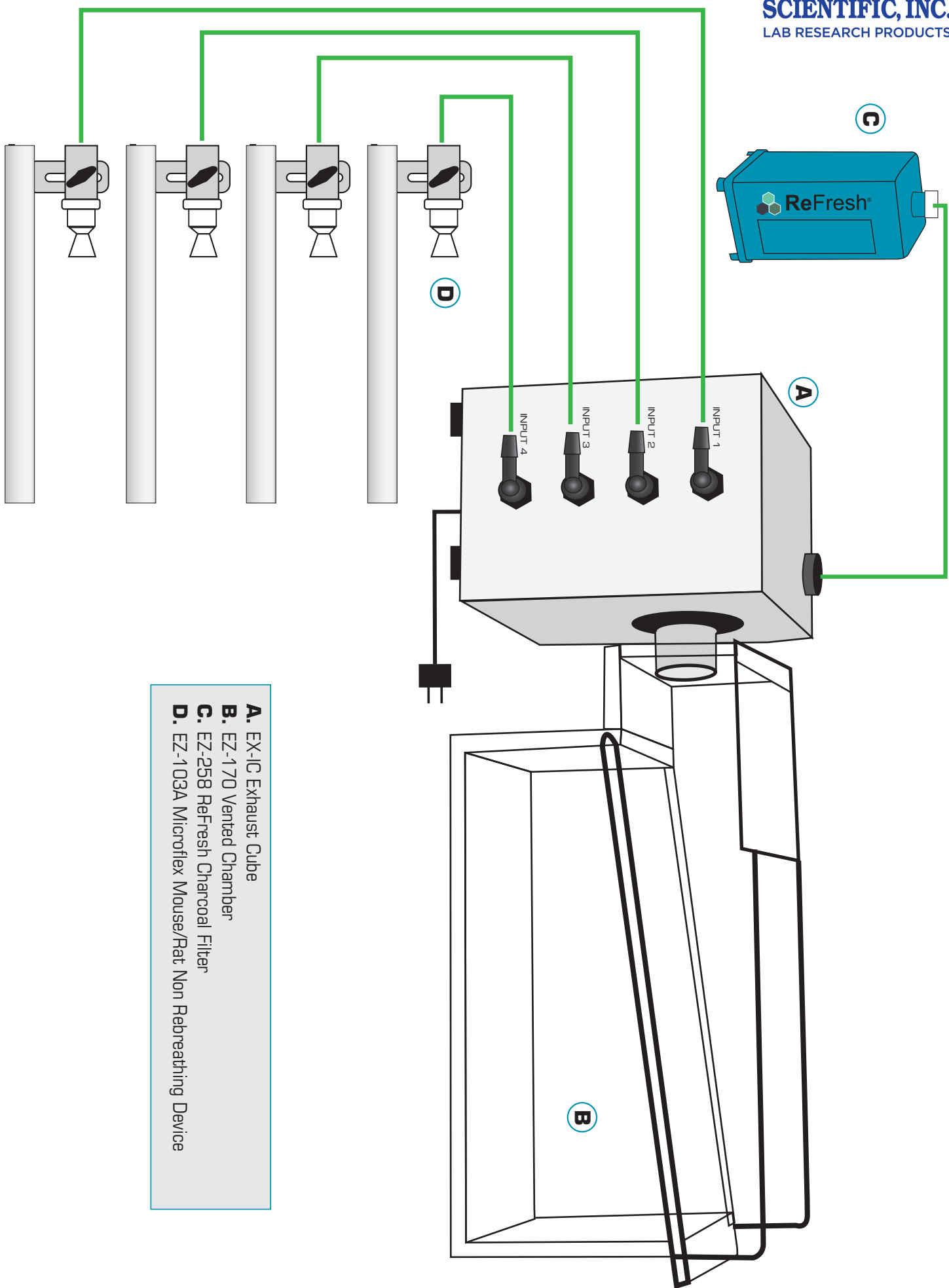
SIDE VIEW



FRONT VIEW

Your Distributor is:
 Braintree Scientific, Inc.
 PO Box 850498, Braintree, MA 02185
 781-917-9526
 Email: Info@braintreesci.com
 Web: www.braintreesci.com

EX-IC Exhaust Cube



- A.** EX-IC Exhaust Cube
- B.** EZ-170 Vented Chamber
- C.** EZ-258 ReFresh Charcoal Filter
- D.** EZ-103A Microflex Mouse/Rat Non Rebreathing Device