

Spectrafuge 24D Digital Microcentrifuge

Reach for the high end of the performance spectrum

- ❑ ***Precise digital control***
- ❑ ***Unique 24 x 1.5/2.0ml easy access rotor***
- ❑ ***Powerful, brushless drive***
- ❑ ***High maximum speed: 13,300rpm/16,300 x g***
- ❑ ***Display rpm or g-force***
- ❑ ***Exceptionally quiet and cool running***
- ❑ ***Optional StripSpin™ adapter for 0.2 ml tubes and strips***



Your Distributor is:
Braintree Scientific, Inc.
PO Box 850498, Braintree, MA 02185
781-917-9526
Email: Info@braintreesci.com
Web: www.braintreesci.com



Spectrafuge 24D Digital Microcentrifuge

Advanced performance and technology

Labnet's new *Spectrafuge 24D* combines innovations such as a unique, easy access rotor, exclusive multi-flow air cooling system and high performance drive. In addition, the *24D* features a digital microprocessor that precisely regulates all aspects of operation. Despite all of its upgrades, this newest member of the *Spectrafuge* family maintains the tradition of being the most economical centrifuge in its class.

□ **Intuitive control system**

Two "smart" knobs are used to control all operating parameters, while speed and time values are shown digitally on large displays. Switching from rpm to g-force is accomplished by pressing the speed control knob. Turning the knob allows the speed value to be set quickly and easily. Run times from 30 seconds to 30 minutes (or continuous) are set with the timer knob. Pressing the timer knob starts operation. For quick spins, this knob can be pressed and held, and elapsed time is shown on the display.

□ **Smooth operation**

The powerful, brushless motor in the *Spectrafuge 24D* quickly and effortlessly accelerates the rotor to set speed. A computer designed isolation system allows for vibration free operation, even with a slight imbalance. A detector shuts down the centrifuge in the case of a significant imbalance. Deceleration at the end of a run is very fast, yet will not disrupt samples. Once the rotor has come to a complete stop, the lid automatically unlocks.

□ **Multi-flow air cooling system**

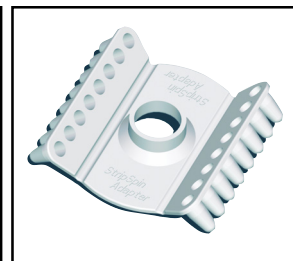
A specially designed air cooling system passes ambient air over both the top *and* bottom of the rotor as well as through the motor chamber of the *Spectrafuge 24D*. Air enters the centrifuge through two intake vents on the back of the housing and is then circulated in multiple directions to maximize cooling. The result is a cool running microcentrifuge that keeps samples close to ambient temperature, even during extended runs at maximum speed. This airflow design also helps to reduce operating noise, making the centrifuge exceptionally quiet. For samples that require below ambient temperatures, the *Spectrafuge 24D* may be used in a cold room.

□ **Innovative rotor design**

The unique design of the 24 place rotor allows easy access to the tops of the sample tubes. Individual tube slots in the solid aluminum rotor support the tubes along their length and contain samples in the event of tube failure. The rotor accepts 1.5/2.0ml tubes directly and smaller tubes through the use of adapters, sold separately. An optional *StripSpin* adapter snaps on top of the rotor for spinning 0.2ml tubes and strips. The rotor is seated on a tapered shaft which facilitates easy removal of the rotor for cleaning and autoclaving.



Easy access rotor



StripSpin™ Adapter

Ordering Information

Cat. No.	Description
C-2400*	<i>Spectrafuge 24D</i> , standard gray, 120V
C-2400-B*	<i>Spectrafuge 24D</i> , blue accents, 120V
C-2400-T*	<i>Spectrafuge 24D</i> , teal accents, 120V
C-2400-P*	<i>Spectrafuge 24D</i> , purple accents, 120V
C-2400-R*	<i>Spectrafuge 24D</i> , red accents, 120V
C-2400-SS	<i>StripSpin</i> adapter for 0.2ml strip tubes
C-1205	Individual adapters for 0.5/0.6ml tubes, pack of 6
C-1206	Individual adapters for 0.4/0.25ml tubes, pack of 6
C-1222	Individual adapters for 0.2ml tubes, pack of 6

Specifications

Max. speed	13,300rpm
Max. g-force	16,300 x g
Maximum capacity	24 x 1.5/2.0ml
Timer	30 minutes, continuous or momentary operation
Dimensions	9.25 x 11.5 x 8.5 inches 23.5 x 29.3 x 21.6 cm
Weight	18 lb/8.2 kg
Electrical*	120V, 50-60 Hz Other voltages available

*Other voltages are available. When ordering, please place the appropriate extension after the catalog number: -100 for 100V, -220-UK for the United Kingdom and -220-EU for Continental Europe.

Your Distributor is:
Braintree Scientific, Inc.
PO Box 850498, Braintree, MA 02185
781-917-9526
Email: Info@braintreesci.com
Web: www.braintreesci.com