

## 51500U Ultra Precise New Standard Stereotaxic, Rat and Mouse



Like the classic Lab Standard™, the Ultra Precise, NEW Standard Stereotaxic Instrument has larger laser engraved Vernier scales (accurate to 10 µm), 80 mm of ventral-dorsal, medial-lateral and anterior-posterior travel, absolute lock at 90° ventral-dorsal and brass-bushings for electrical grounding.

### **KEY FEATURES**

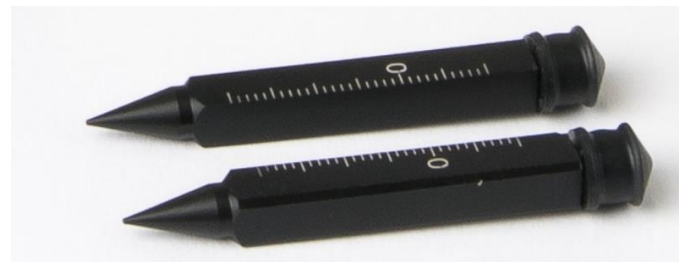
- 10 Micron Resolution
- Target Small Brain Regions with Confidence
- Revolutionary vertically-adjusting ear and nose bar posts
- Revolutionary horizontally-adjusting ear and nose bar posts
- Designed for both Rats and Mice all on the same base
- No U-frame, maximizes operating space
- Traditional and non-traumatic Rat ear bars
- Includes the innovative Mouse ear bars
- Includes Mouse and Rat Nose adaptors
- Warmer ready base compatible with Stoelting Rodent Warmer Systems

Your Distributor is:  
Braintree Scientific, Inc.  
PO Box 850498, Braintree, MA 02185  
781-917-9526  
Email: [Info@braintreesci.com](mailto:Info@braintreesci.com)  
Web: [www.braintreesci.com](http://www.braintreesci.com)

Includes Mouse and Rat nose adaptor



Includes dual tip ear bars with traditional (18°) and non-traumatic (45°) ear bars



Your Distributor is:  
Braintree Scientific, Inc.  
PO Box 850498, Braintree, MA 02185  
781-917-9526  
Email: [Info@braintreesci.com](mailto:Info@braintreesci.com)  
Web: [www.braintreesci.com](http://www.braintreesci.com)