

## DIURESIS CAGE - RATS

**3700D000**  
Diuresis cage for rats up to 300 g  
all included (stand to be ordered separately)

**3701D000**  
Diuresis cage for rats over 300 g  
all included (stand to be ordered separately)

**1 3700M024** (PC)  
Cage cover

**2 3700M001** (PC)  
Upper chamber - rats up to 300 g

**10 3700MD025** (PMP)  
Fluid collection funnel

**20 3700M308** (S/S)  
Solid feeder/bottle gate plate  
for Cat 3700M001

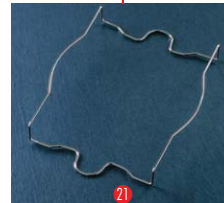
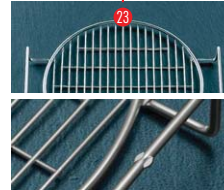
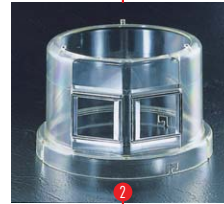
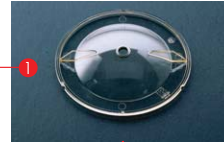
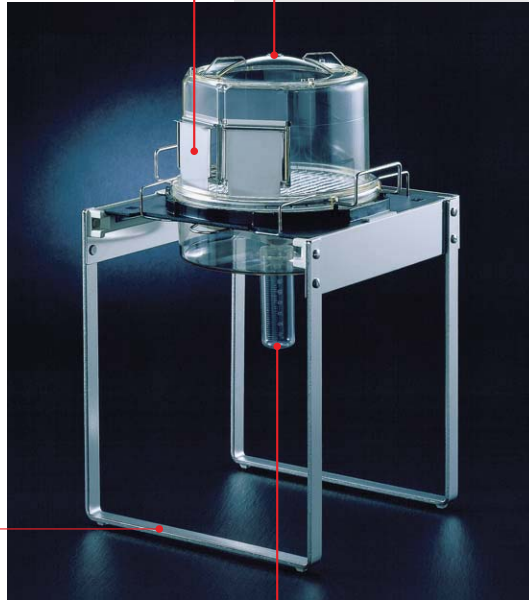
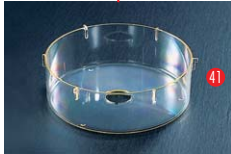
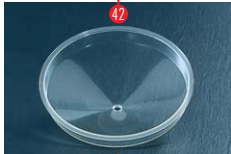
**21 3700M310** (S/S)  
Retainer wire

**22 3700M020** (PC)  
Cage support plate

**23 3700M319** (S/S)  
Support grid for rats

**28 3700M017** (PMP)  
Fluid collection tube for rats - 70 ml

**3M01D100** (S/S)  
Stand single cage  
see page 15



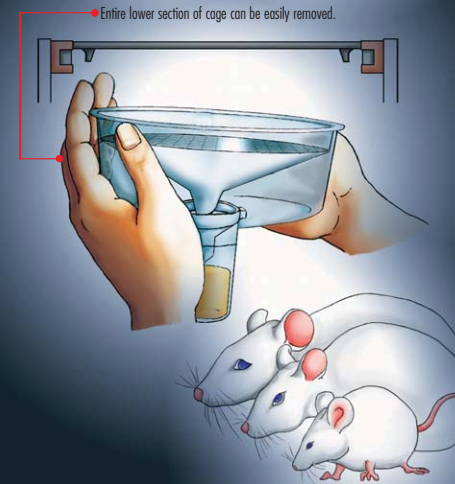
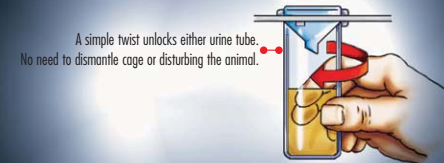
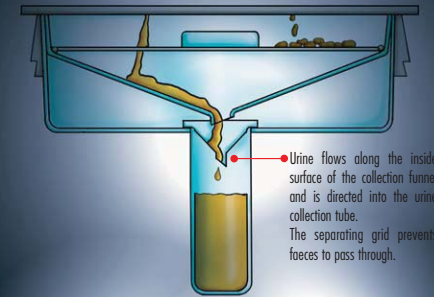
**33 3701M001** (PC)  
Upper chamber - rats over 300 g

**38 3701M308** (S/S)  
Solid feeder/bottle gate plate  
over 300 g for Cat 3701M001

**41 3700D005** (PC)  
Lower container

**42 3700D006** (PMP)  
Cone

**43 3700D312** (S/S)  
Separating grid for rats faeces  
and urine



PC = polycarbonate • PMP = polymethylpentene • S/S = stainless steel

Your Distributor is:  
Braitree Scientific, Inc.  
PO Box 850498, Braitree, MA 02185  
781-917-9526  
Email: [Info@braintreesci.com](mailto:Info@braintreesci.com)  
Web: [www.braintreesci.com](http://www.braintreesci.com)

## DIURESIS CAGE

### A simple urine collection cage

The cage is made up of 8 parts. It speeds up urine collection procedures whilst combining the advantages of a metabolic cage, such as:

- maintains a suitable microclimate inside the cage
- limits the loss of liquids due to evaporation
- simplicity of operations and total part interchangeability
- many of the components can be used to convert a diuresis cage into a metabolic cage
- the lower part of the cage is removable without disturbing the animal
- the material selected for this cage is recommended for high resistance to typical decontaminating agents used with radioactive materials.

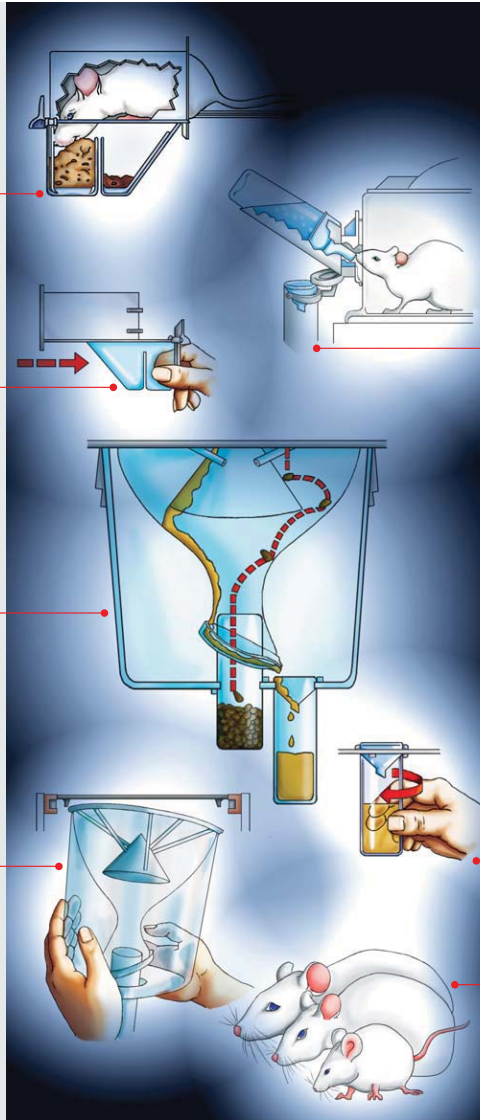
All cage parts and stands are autoclavable.  
Replacement parts are available.

Two-part feeder chamber is located outside cage. Rear chamber catches spilled food so faeces won't be contaminated. Feeder sizes prevent rodent from nesting or sleeping inside. Available in four sizes.

Drawer slides out of feeder chamber for easy filling, without disturbing animal.

Urine flows along the inside surface of the collection funnel and is directed by the urine ring directly into the urine collection tube.

Entire lower section of the cage can be easily removed. Convenient for cleaning during multi-phase investigation.



## METABOLIC CAGES FOR RODENTS

These meticulously engineered cages feature a unique funnel and cone design that effectively separates faeces and urine into tubes outside the cage. There's no urine washover and no potential for urine to enter the faeces tube, so separation is immediate and complete. The results are untainted and samples reliable.

The cage has only 14 parts. The components are designed for simplicity of operation and total part interchangeability, major consideration in multi-unit testing programs. All parts below the cage floor are removable without disturbing the test animal, allowing tests to be conducted over a prolonged period of time without interruptions caused by animal re-acclimatisation.

The cage performs well with either mice (in group) or rats; only the feeders and floor grids must be changed.

### Features:

- Upper chamber, made of PC Surface is smooth, gnaw-proof, silent. Two models are available:
  - for mice and rats up to 300 g, with a surface of 320 cm<sup>2</sup> and a height of 14 cm;
  - for rats over 600 g, with a surface of 450 cm<sup>2</sup> and a height of 18 cm.

Surface and height are in compliance with the current rules and regulations.

- Feeder chamber, located outside cage. Size discourages rodent from nesting or sleeping inside. The PC drawer slides out for easy filling without disturbing the animal. Ideal for slurries, liquid or powders. Not designed for food in pellet form.
- Collection funnel and separating cone, unique design and non-wetting PMP ensure immediate, complete separation of faeces and urine.
- Faeces Collection tube, made of non-wetting PMP. Pellets roll down side of funnel to be collected in tube. Unlocks with single twist from outside of cage, without disturbing animal.
- Urine collection tube, made of non-wetting PMP, graduated, unlocks outside cage without disturbing animal. Can be cooled in the B940 Rack.
- Support grid, SS grid lets excreta pass through the widely-spaced bars; mouse cage includes mouse-sized grid. Handles permit easy transport of cage without stand.

All cage parts and stands are autoclavable.  
Before starting metabolism tests it is important to let the animal acclimatize on the grid for at least 48 hours.

6

7

Your Distributor is:  
Braintree Scientific, Inc.  
PO Box 850498, Braintree, MA 02185  
781-917-9526  
Email: [Info@braintreesci.com](mailto:Info@braintreesci.com)  
Web: [www.braintreesci.com](http://www.braintreesci.com)